



Engaging communities in transport planning

Ali Lamb

Transport Engagement Officer



Community Engagement in Newcastle 2011

- A long and highly regarded approach
- Established in policy (Community Engagement Strategy, Community Empowerment Framework) and monitored by senior officers and politicians through Newcastle Partnership, Overview and Scrutiny & Portfolio holders
- Delivered by a well resourced team of council staff and community and voluntary sector partners
- Numerous local and citywide structures and processes to engage with

Community Engagement in Newcastle 2016

- Continued austerity and increasing expectations
- Very few of the processes and mechanisms are still around but the belief and commitment from politicians and officers still is
- Transport development in Newcastle has evolved it's own processes and procedures to encourage and enable community and stakeholder engagement

Transport Engagement Processes – ‘Our’ Ladder of Participation

Co- producing

Collaborating

Consulting

Informing

Informing

Television & radio

Newspapers & e-bulletins

Social Media

Website

Letters, emails & briefings

Re-newcastle Website

Home



The renewal and regeneration of the city

Transport Projects

› Acorn Road

› Barras Bridge (including St Mary's Place)

› Blue House roundabout

› Brandling Park

› Broadway to Brunton Lane

› Broadway to Hollywood

› Central Gateway

› Central Gateway Phase 2

› Church Road-Alwinton Terrace-Moor Road North

› Claremont Road

› Cowgate Junction Improvements

› Durant Road and Ellison Place

› Grandstand Road / Kenton Road

[HOME](#) / [TRANSPORT](#) / [TRAFFIC](#) / BARRAS BRIDGE (INCLUDING ST MARY'S PLACE)

Barras Bridge (including St Mary's Place)

City Centre North



Project

Barras Bridge (including St Mary's Place)

Consulting

Commonplace

Let's Talk Newcastle

Meetings

Drop-ins

Street work

Commonplace

Map

Blue House

Jesmond Dene Road

Haddricks Mill

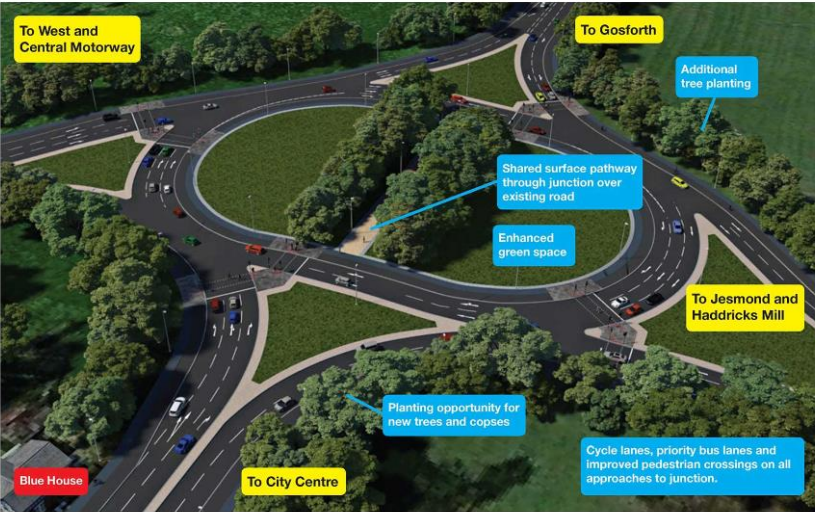
← Previous

Next →

What we are proposing

The design we are proposing is a much bigger roundabout than the current layout, with traffic lights controlling access to the system. We are proposing separated, protected space for people on foot and also on bikes on most approaches to the junction, and will enable people on foot or bikes to either pass through the centre of the roundabout or go safely around it using crossings set back from the roundabout depending on their choice of route.

Proposed layout



Blue House roundabout proposed layout. The roundabout would be moved north of Blue House. Click to zoom

We have designed the roundabout in such a way that despite being bigger than the current layout it requires less space and loss of existing trees than some other options we have considered. The junction would be safer, more

← Previous

Next →

Share

Share

3 months ago

How are you usually in this location? (tick all that apply)

In a car / private vehicle

What do you like about the design? (tick all that apply)

safer cycling facilities

safer places to cross

What don't you like?

Too big, takes away what seems like an unnecessarily large amount of the Little Moor.

No options or other ideas given

How could it be improved?

Simpler traffic flow designs using lights, smaller design not destroying our beautiful and much loved green space

Share

Share

3 months ago

How are you usually in this location? (tick all that apply)

In a car / private vehicle

What do you like about the design? (tick all that apply)

reduces congestion

What don't you like?

Impact on Town Moor. No confidence in Highways Dept given past changes at Central Str, Regent Centre, Cowgate Roundabout ...

How could it be improved?

Does it have to be so large and have its location moved?

Share

Share

3 months ago

How are you usually in this location? (tick all that apply)

In a car / private vehicle

What don't you like?

This scheme is over the top and a senseless destruction of the Little Moor and Dukes Moor

How could it be improved?

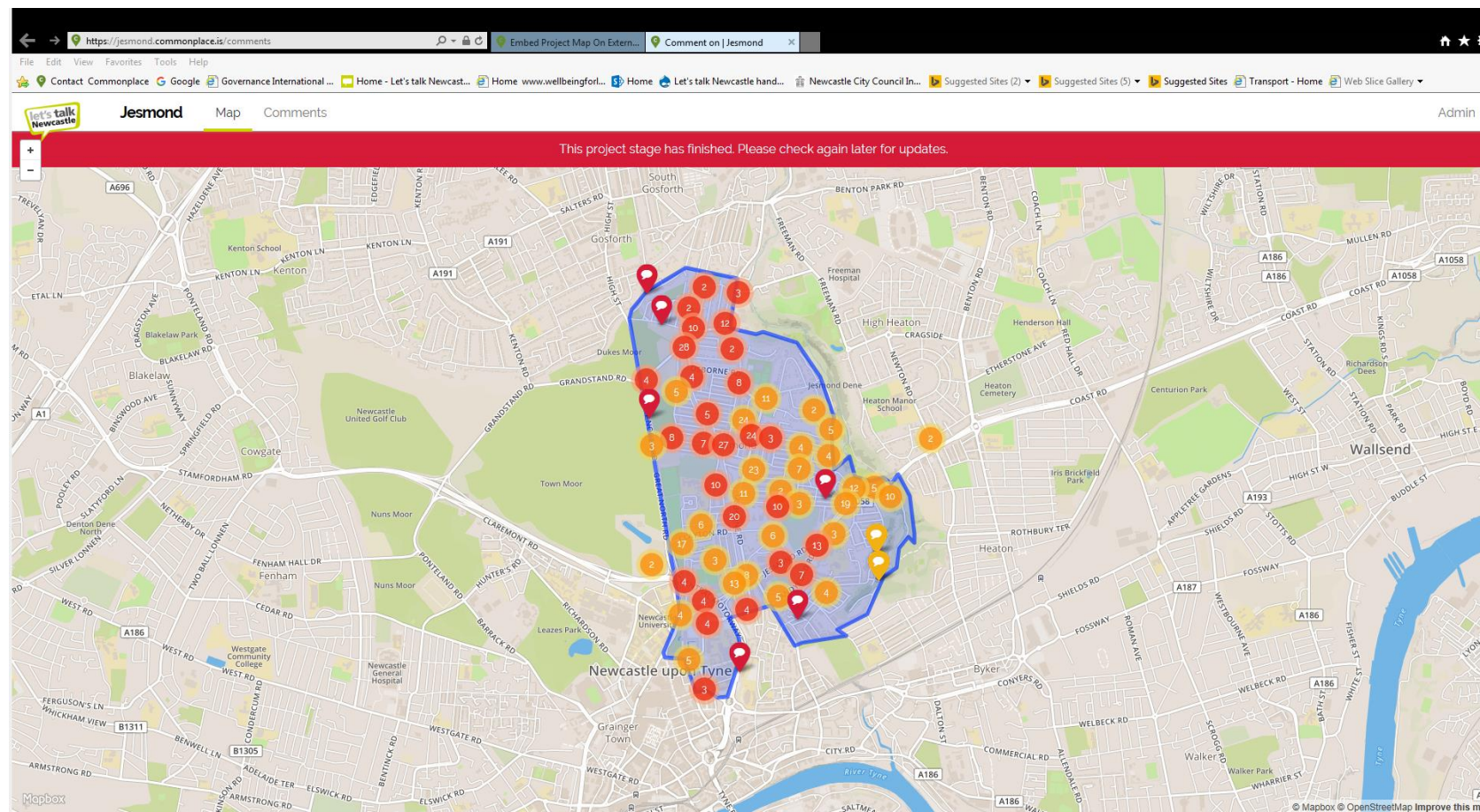
Collaborating

Regular seminars & discussions

Technical support & best practice

Streets for People – early stages

Streets for People Perception Survey



Co-Producing

Streets for People – later stages

Blue House Working Group

Streets for People

- Reference groups committed to take findings from the perception survey forward
- Urban design services commissioned to support them to do so
- Interpretation of the surveys and all local context information to take place in a series of workshops
- Leading to a set of consultation-ready neighbourhood improvement plans



Blue House roundabout – from controversy to co-production

‘Thousands protest against Blue House roundabout plans’

‘MP sees red on city’s big Blue House revamp’

‘Homeowners’ fears over Blue House and Haddricks Mill roundabouts shake-up’

‘Newcastle’s Blue House super-roundabout plans slammed as ‘out of proportion’



‘Joy as Newcastle City Council scrap controversial Town Moor ‘mega-roundabout’ plan’

Blue House Working Group

- Over 3,500 comments on Commonplace → over 2,000 people came to drop-in sessions → 2,000 attended a march on the Town Moor → MP led Town Hall meeting → Proposals withdrawn
- Blue House Working Group established with specific terms of reference to co-produce a new design for the junction
- The working group is due to report early in the New Year



Thank you for listening, any questions or comments?