

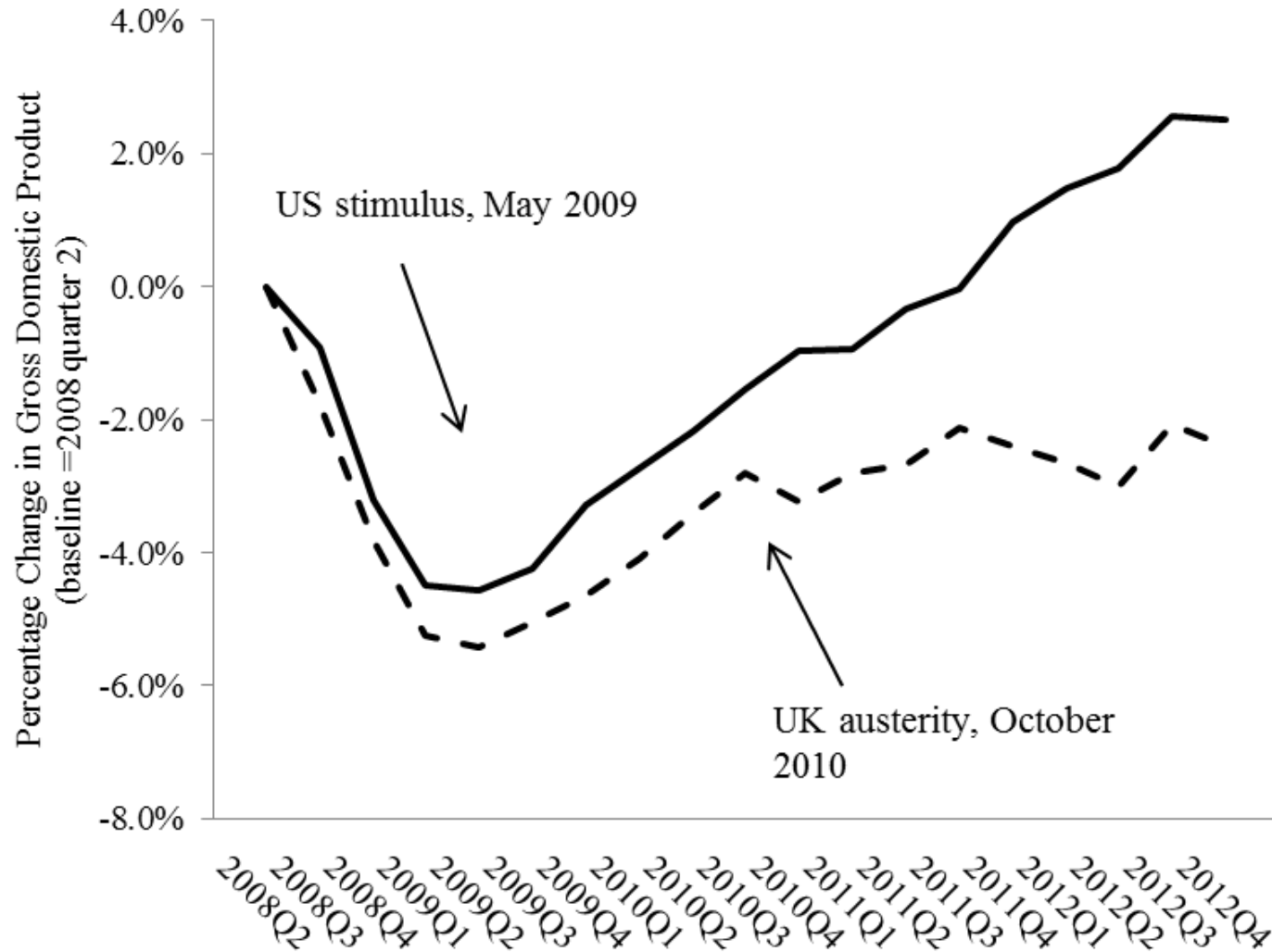


# Actual Data

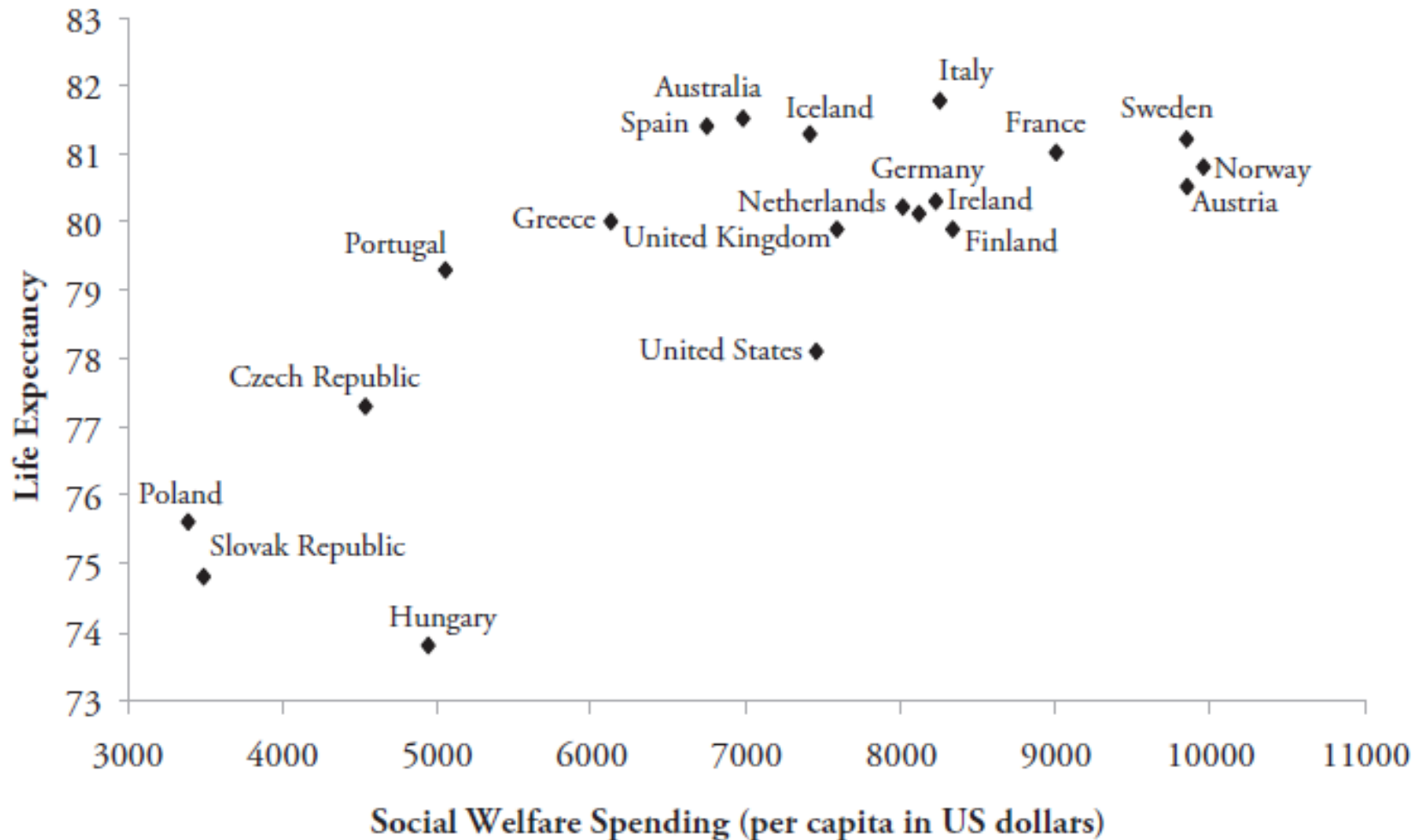
	A	B	I	J	K	L	M	N
1		<b>Table 2: Estimates for Fraud and Error by Client Group and Error Type</b>						
2		<a href="#">Return to Contents</a>						
3								
25		<b>Income Support Disabled and Others</b>	<b>Overpayments due to Fraud - 2011/12</b>					
26		<a href="#">See Chart 10</a>	<b>Percentage of expenditure overpaid</b>		<b>Amount of expenditure overpaid</b>			
27		Capital	0.5%	(0.3%, 0.8%)	£25m	(13m, 39m)		
28		Conditions of Entitlement	0.0%	(0.0%, 0.1%)	£2m	(0m, 5m)		
29		Abroad	0.2%	(0.0%, 0.3%)	£7m	(1m, 16m)		
30		Claimant Untraceable	0.4%	(0.2%, 0.6%)	£17m	(8m, 27m)		
31		Household Composition	0.2%	(0.0%, 0.3%)	£8m	(1m, 16m)		
32		Housing Costs	0.0%	(0.0%, 0.0%)	£0m	(0m, 0m)		
33		Residency	-	- -	-	- -		
34		Passporting	-	- -	-	- -		
35		Non-Dependant Deductions	0.0%	(0.0%, 0.0%)	£0m	(0m, 0m)		
36		Earnings/Employment	0.2%	(0.1%, 0.4%)	£11m	(5m, 18m)		
37		Income Other Benefits	-	- -	-	- -		
38		Income - Occ & Pers Pensions	0.2%	(0.1%, 0.3%)	£8m	(3m, 14m)		
39		Income - Other	0.0%	(0.0%, 0.0%)	£0m	(0m, 1m)		
40		Tax Credits	-	- -	-	- -		
41		Living Together	0.4%	(0.2%, 0.6%)	£17m	(8m, 28m)		
42		Premiums	0.0%	(0.0%, 0.0%)	£0m	(0m, 0m)		
43		Control activities are not carried out appropriately	-	- -	-	- -		
44		Labour Market Issues	-	- -	-	- -		
45		Other	0.1%	(0.0%, 0.3%)	£6m	(1m, 13m)		
46		<b>Income Support Lone Parents</b>	<b>Overpayments due to Fraud - 2011/12</b>					
47		<a href="#">See Chart 11</a>	<b>Percentage of expenditure overpaid</b>		<b>Amount of expenditure overpaid</b>			
48		Capital	0.1%	(0.0%, 0.2%)	£2m	(0m, 5m)		
49		Conditions of Entitlement	0.1%	(0.0%, 0.3%)	£3m	(1m, 6m)		
<div> <a href="#">Summary</a> <a href="#">Contents</a> <a href="#">Table 1</a> <a href="#">Table 2</a> <a href="#">Table 3</a> <a href="#">Table 4</a> <a href="#">Table 5</a> <a href="#">Table 6</a> <a href="#">Table 7</a> <a href="#">Table 8</a> <a href="#">Chart1</a> <a href="#">Chart2</a> <a href="#">Chart3</a> <a href="#">Chart4</a> <a href="#">Chart5</a> <a href="#">Chart6</a> </div>								
Ready								

Source: Department for Work and Pensions

# Stimulus versus austerity



# Social spending saves lives

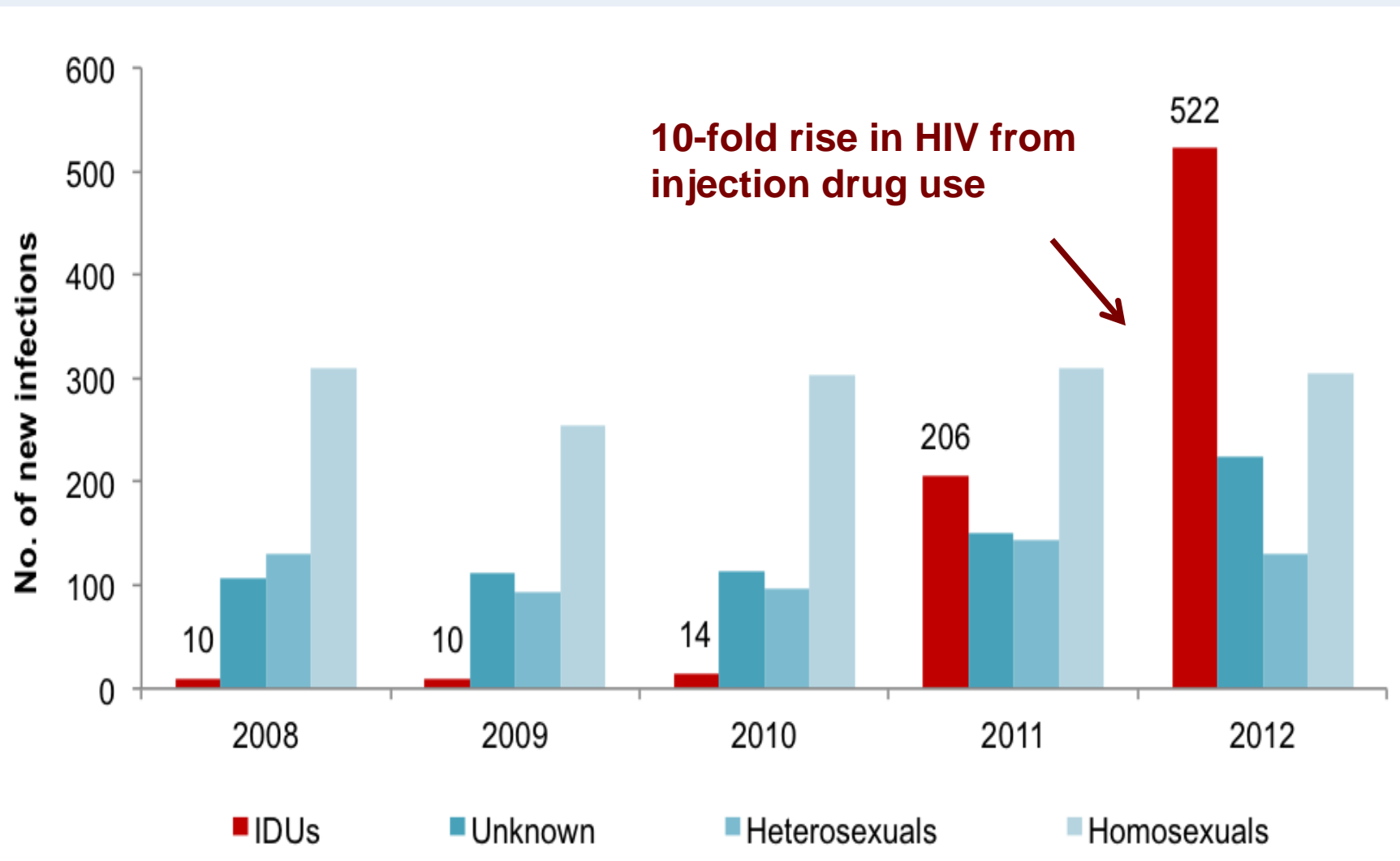


# Greek Austerity

*Journalist: You asked hospital administrators to present you their 2011 budgets reduced by 40%. Is this possible?*

*Minister: It is, to the extent that our 2011 policies are implemented. These, like all other government policies, need a surgical scalpel and very sensitive hands. Difficult. Because the Greek public administration does not have sensitive hands: it cannot use a scalpel, it uses butcher's knives...*

# Greece HIV outbreak



Source: Kentikelenis et al 2012, The Lancet

# Greek Tragedy

- >200% rise in HIV infections
- 40% rise in homelessness
- 50% rise in people unable to access medical care despite feeling it was necessary
- 40% increase in infant mortality
- ~60% reported increase in suicides



Source: Kentikelenis A, Karanikolos M, Papanicolas I, Basu S, McKee M, Stuckler D.  
Health effects of financial crisis: omens of a Greek tragedy. Lancet 2014

# God Bless Iceland







# Iceland's Loud 'No'

- Health minister resigned in protest
- First referendum since 1944
- Total debt stood at >800% of GDP
- 93% voted no to paying back IceSave
- Rejected austerity

“We were wise enough not to follow the traditional prevailing orthodoxies of the Western financial world in the last 30 years. We introduced currency controls, we let the banks fail, we provided support for the poor, and we didn't introduce austerity measures like you're seeing here in Europe.”

- Olafur Grimmson, President

# Happy Icelanders

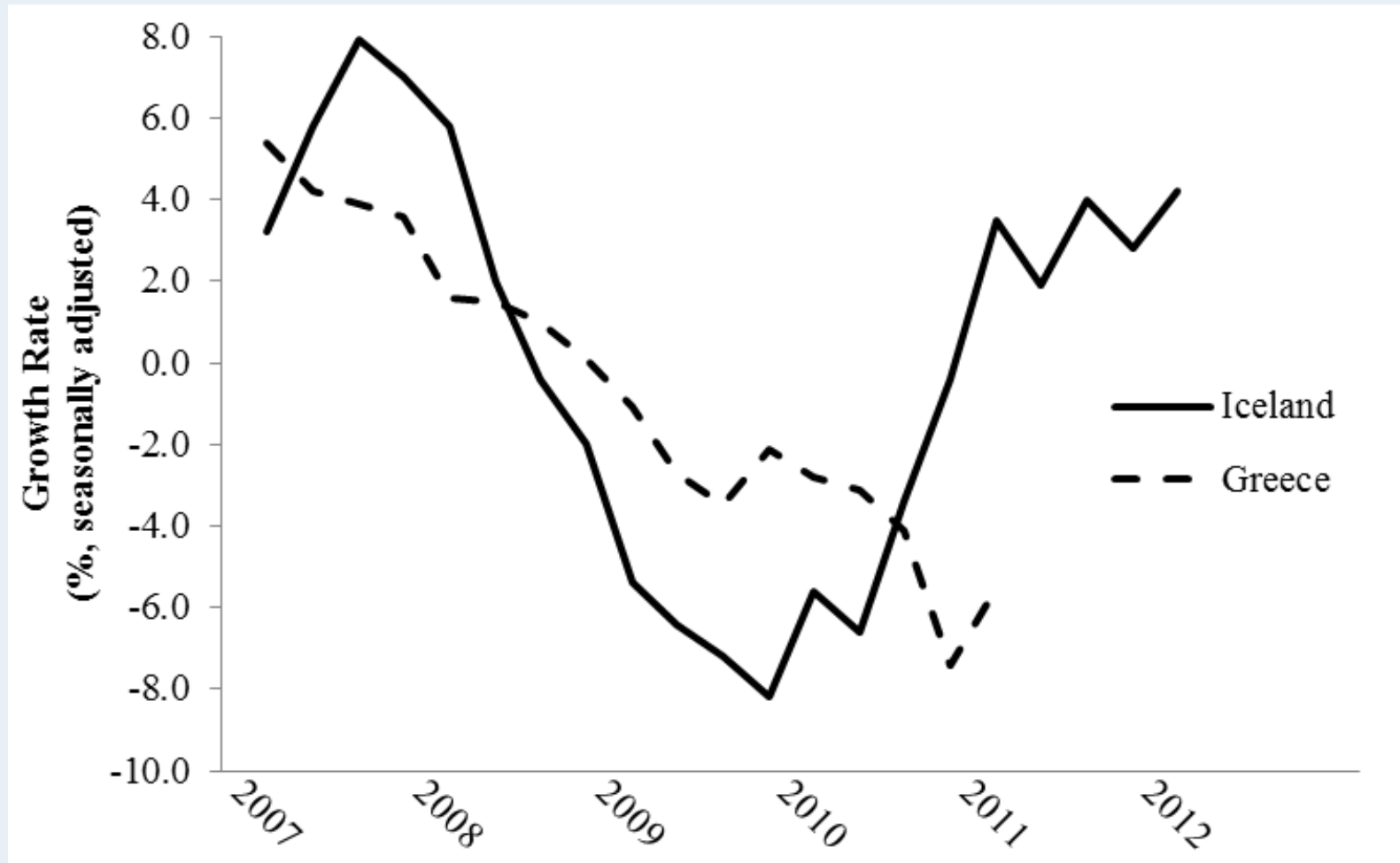
## WORLD HAPPINESS REPORT

Edited by John Helliwell, Richard Layard and Jeffrey Sachs

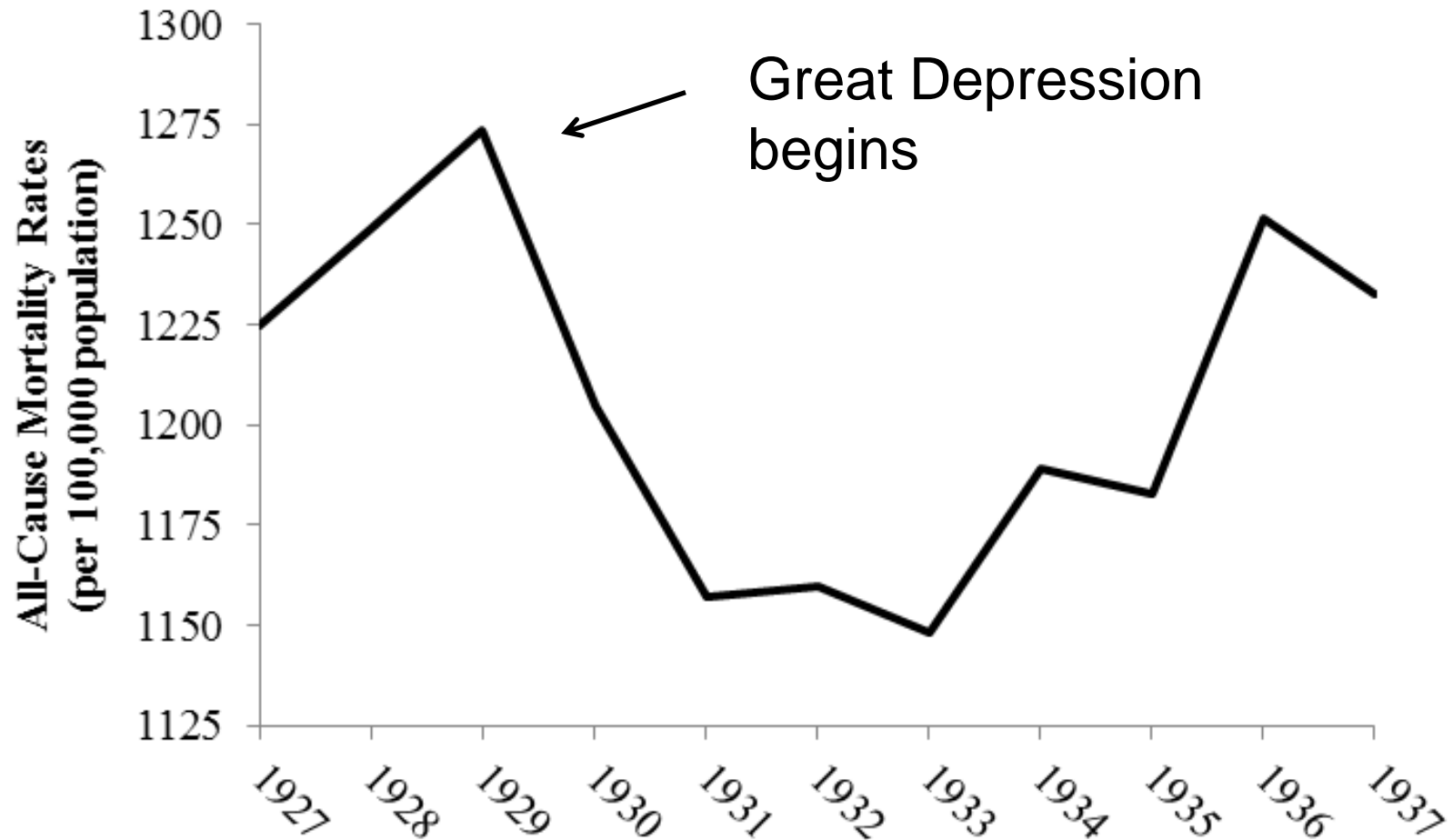


- Social welfare increased
- No loss of healthcare access (apart from dental care)
- Increase in sleeping
- Decrease in fast-food
- Increase in fish consumption

# Economic Growth in Iceland and Greece



# US Great Depression, 1930s



# New Deal and Public Health

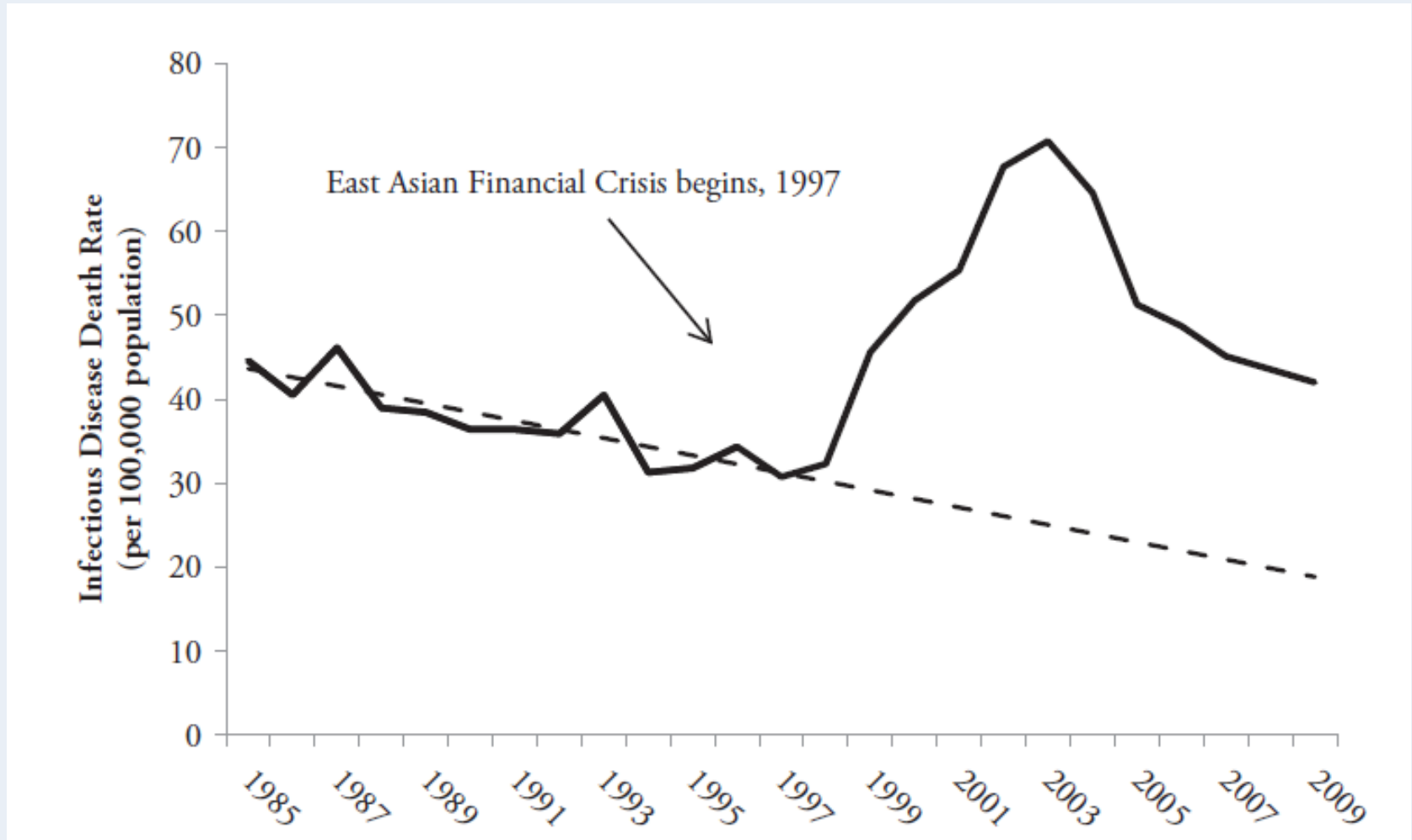


- More New Deal spending where governor a democrat
- Each \$100 (70 pounds) per capita New Deal spending led to about per 100,000 population:
  - 4 fewer suicides,
  - 18 fewer pneumonias,
  - 20 fewer infant deaths



# Asian Financial Crisis, late 1990s

Thailand's HIV, TB, and infectious disease trends





# IMF admits error



IMF Working Paper

WP/13/1

Growth Forecast Errors and  
Fiscal Multipliers

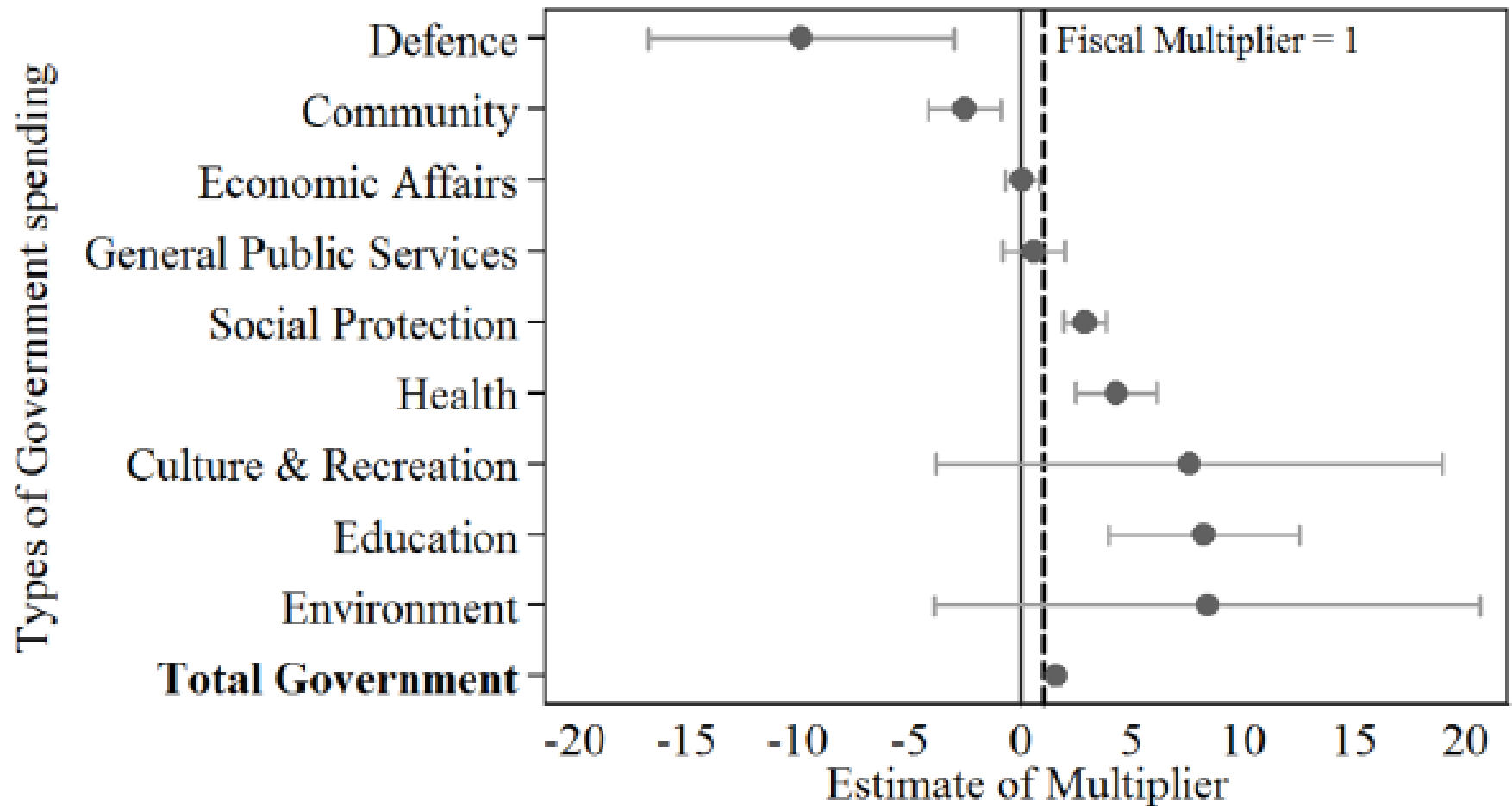
*Olivier Blanchard and Daniel Leigh*

“We underestimated  
the negative effect of  
austerity on  
employment and  
spending power”

Fiscal multiplier  
assumed: 0.5

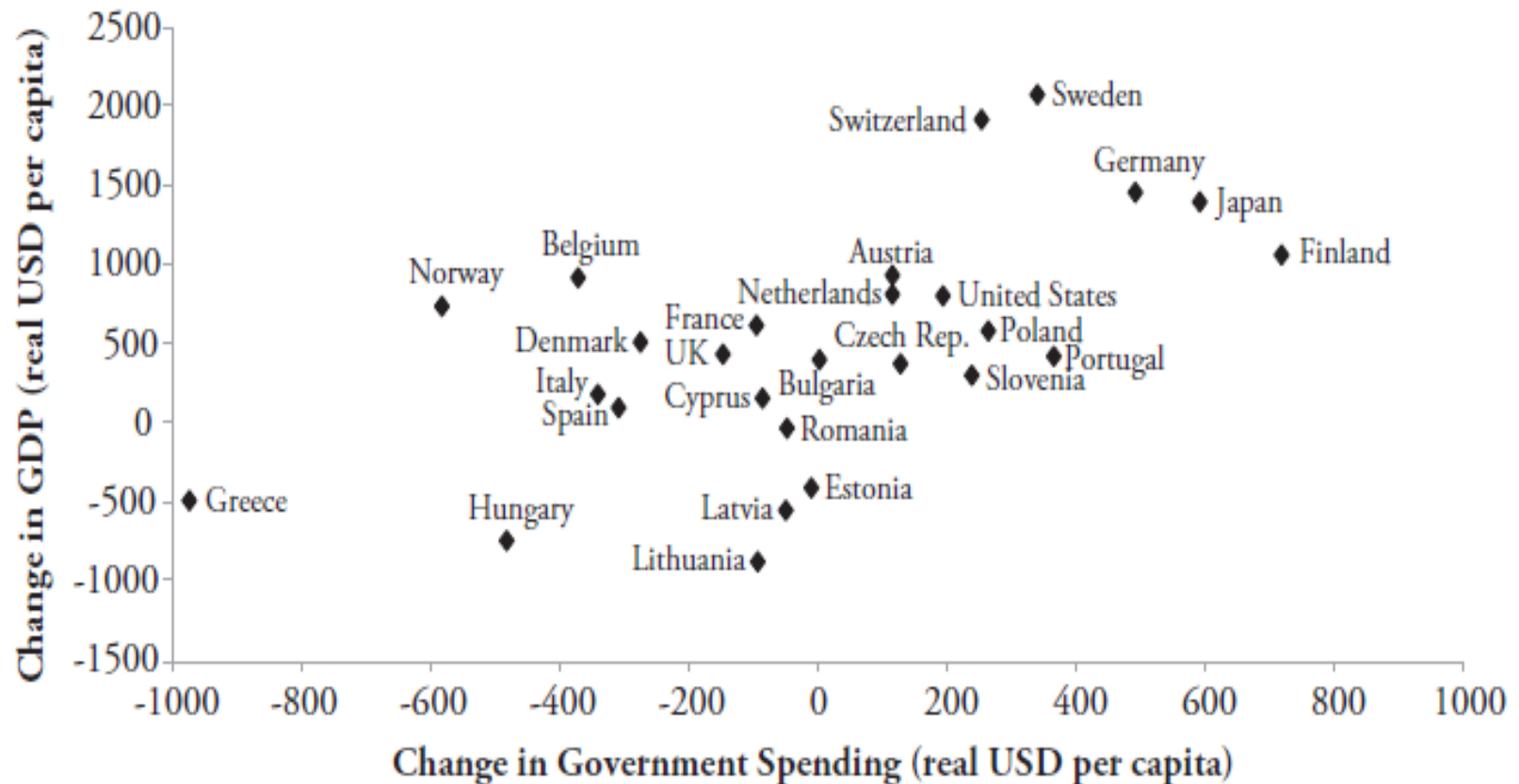
Actual multiplier: 1.7

# Fiscal Multipliers



Source: Reeves et al 2013

# Greater public spending, faster economic recovery



# Greek Response

Dr. Liaropoulos      “no hard evidence  
has proven that  
[crisis] has become a  
health hazard

“[budget reductions]...a  
positive result of  
improvements in  
financial management  
efficiency.”

# Greek Tragedy

**Dr. Sprenger**  
Director of the  
European Centre for  
Disease Control

“I have seen places where the financial situation did not allow even for basic requirements like gloves, gowns and alcohol wipes...after visiting hospitals there I’m now really convinced we have reached one minute to midnight in this battle

**Dr. Friedman**  
US director of  
HIV/AIDS research

What [the Greek government] are doing is creating an epicenter for the spread of the virus [HIV] in Greece and beyond

# More Austerity

## Greece bailout extension 'to cost 32bn euros more'

**A draft document prepared for eurozone finance ministers suggests that Greece should be given two more years to meet budget goals, but that this will add 32.6bn euros (\$41.4bn) to its bailout.**

Eurozone finance ministers have met in Brussels to discuss new targets for Greece based on the report.

The ministers also delayed a decision on whether to release the latest 31.5bn euro tranche of bailout funds.

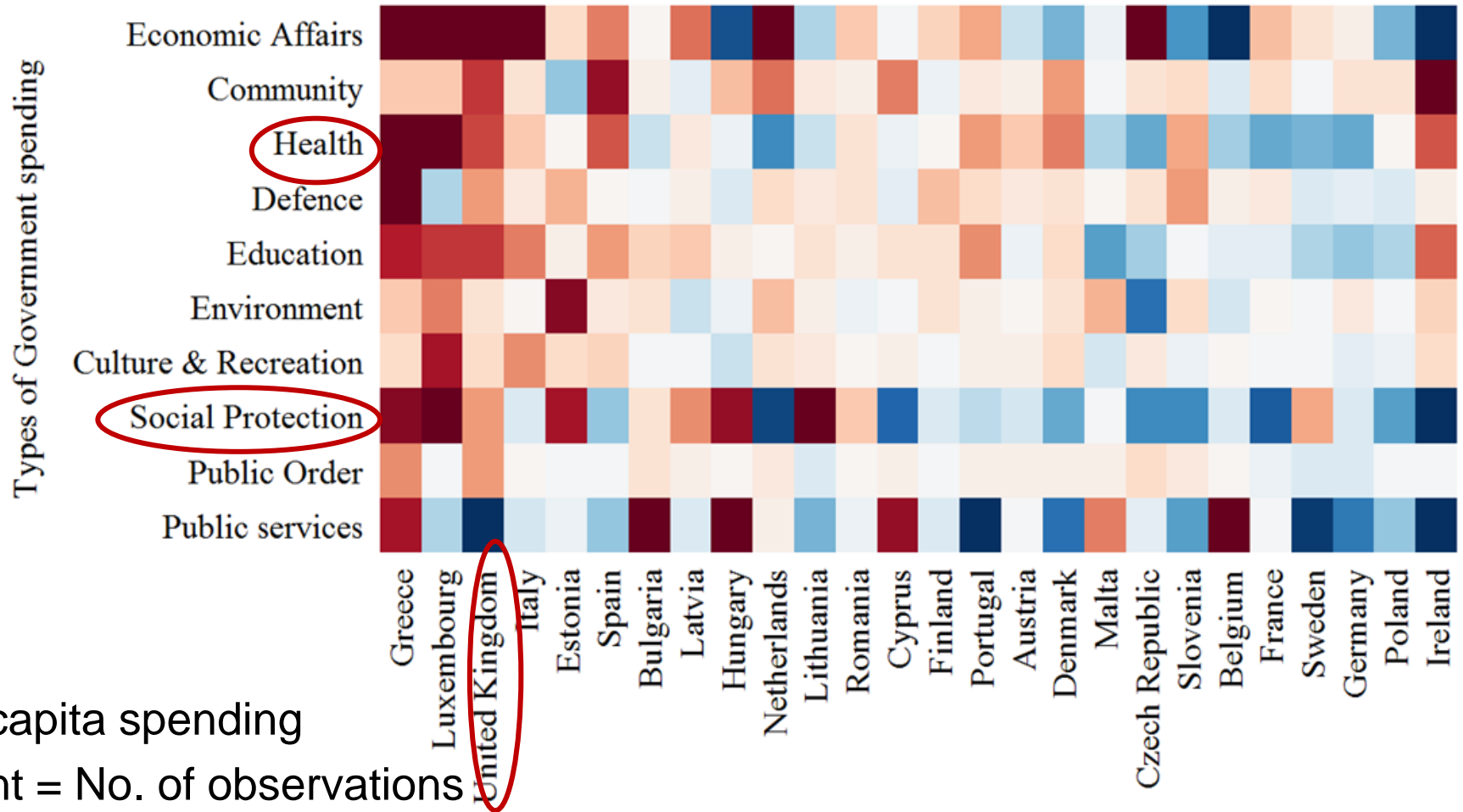


The Greek finance minister and the IMF's Christine Lagarde attended the talks in Brussels

**Eurozone crisis**



Blue = increased spending





# Attack on the weakest

Significantly greater cuts in more deprived regions

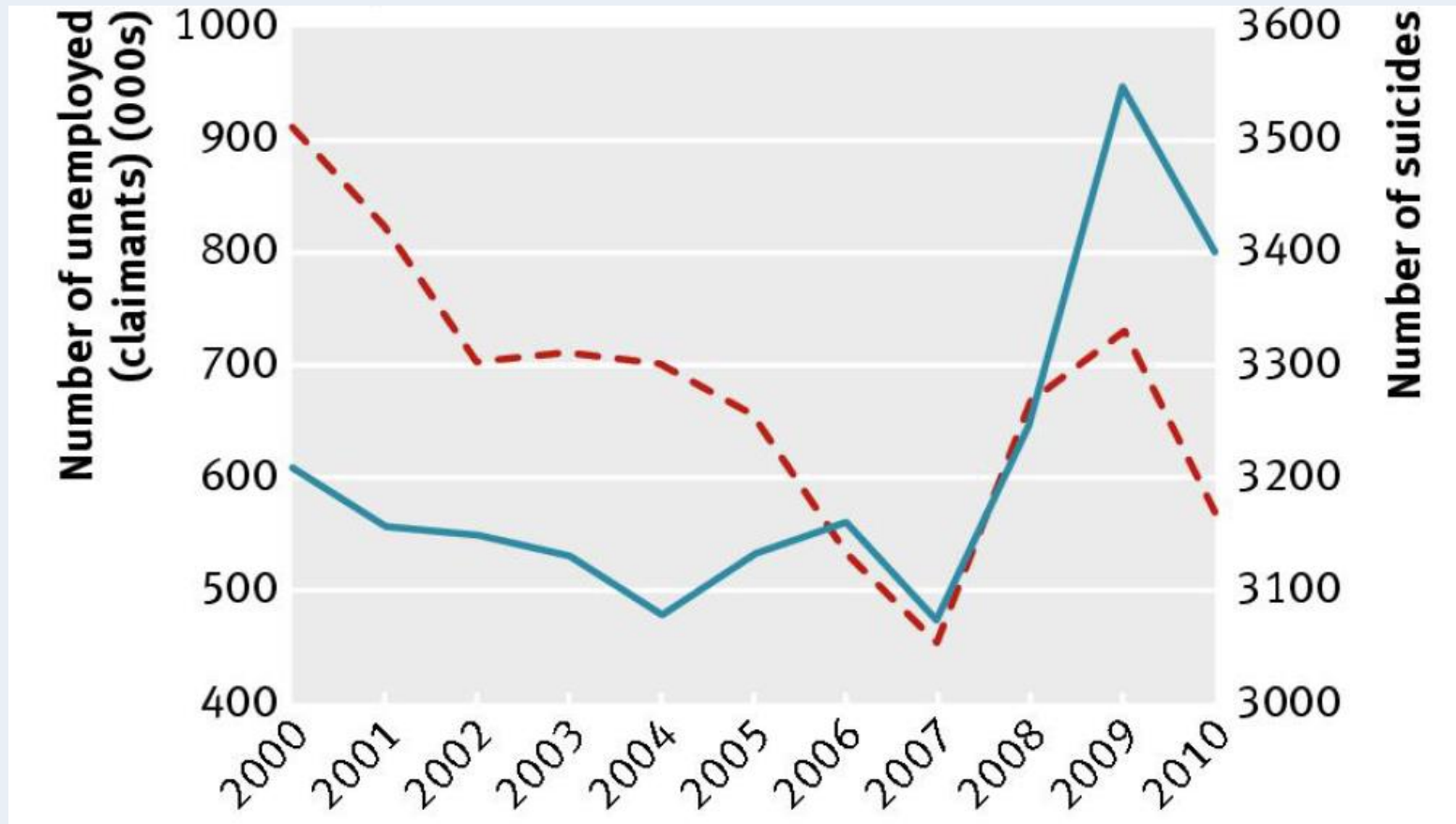


Source: ONS 2012 data

# Rising 'economic suicides'

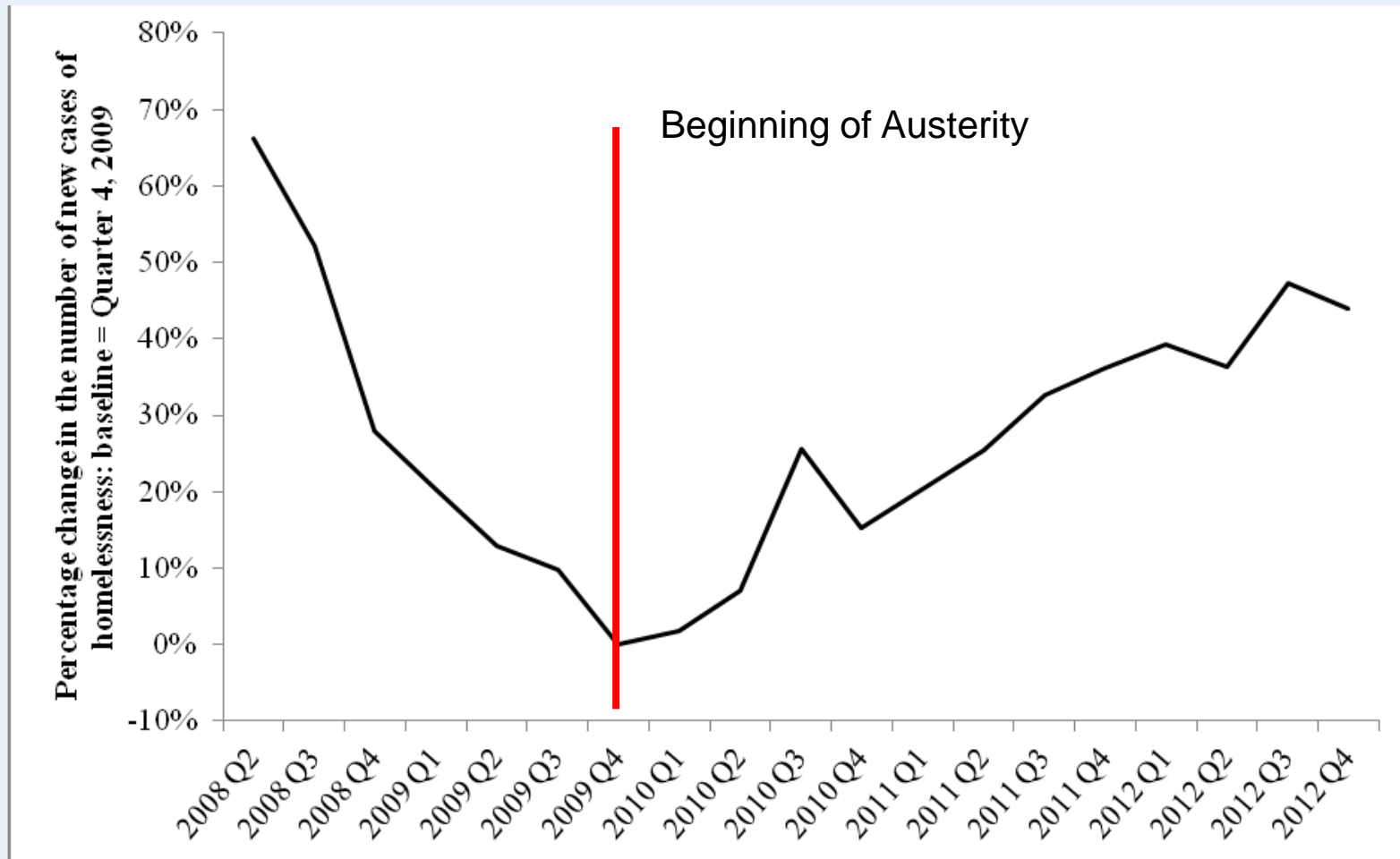
Suicide

Unemployment



# Increasing homelessness

Percentage change in homelessness numbers  
baseline = quarter 4, 2009



Notes: Government definition of homelessness changed in the fourth quarter of 2010.

# Impoverishing disabled persons

- 280,000 people will experience reduced payments up to £4212 per year
- 150,000 currently live in poverty
- Additional 50,000 people at risk of poverty due to these changes.





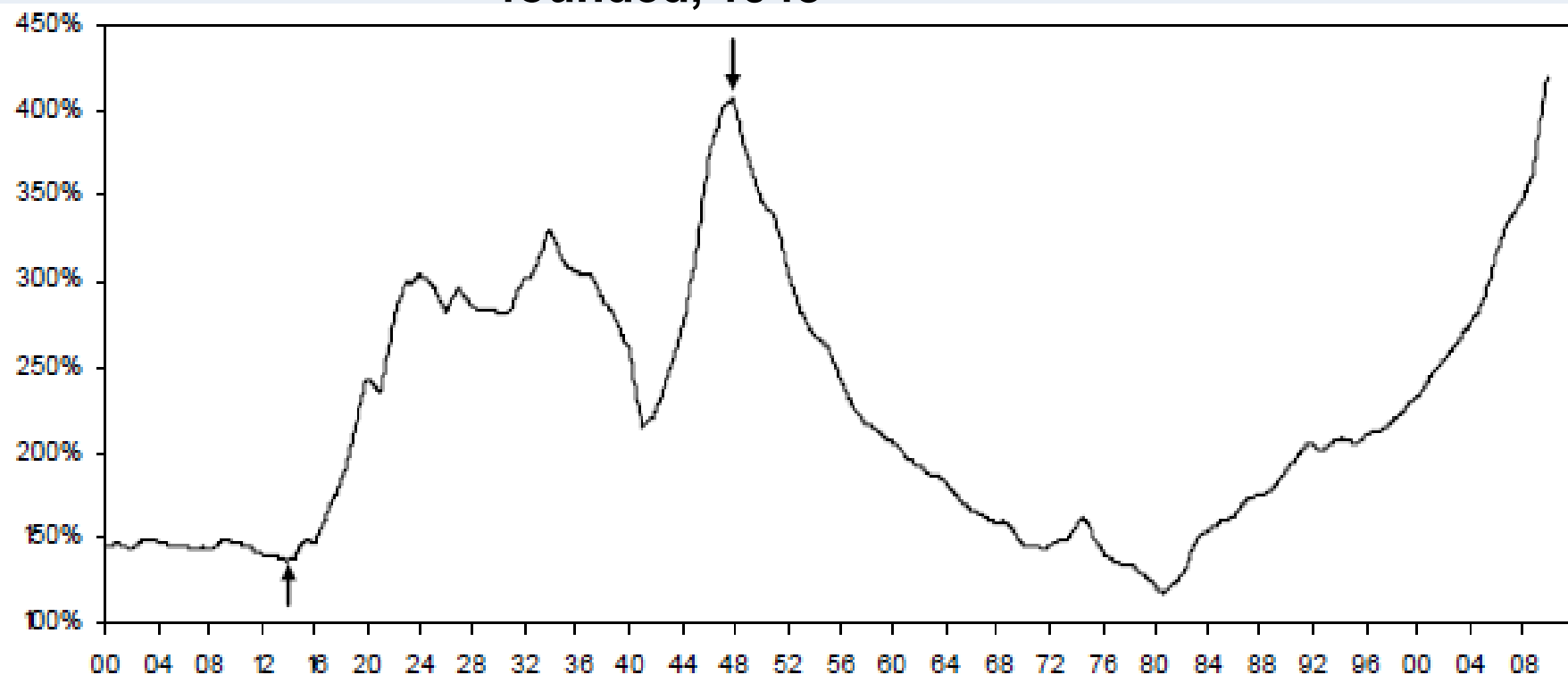
Aneurin Bevan, 1948

“Despite our financial and economic anxieties, we are still able to do the most civilized thing in the world – put the welfare of the sick in front of every other consideration”

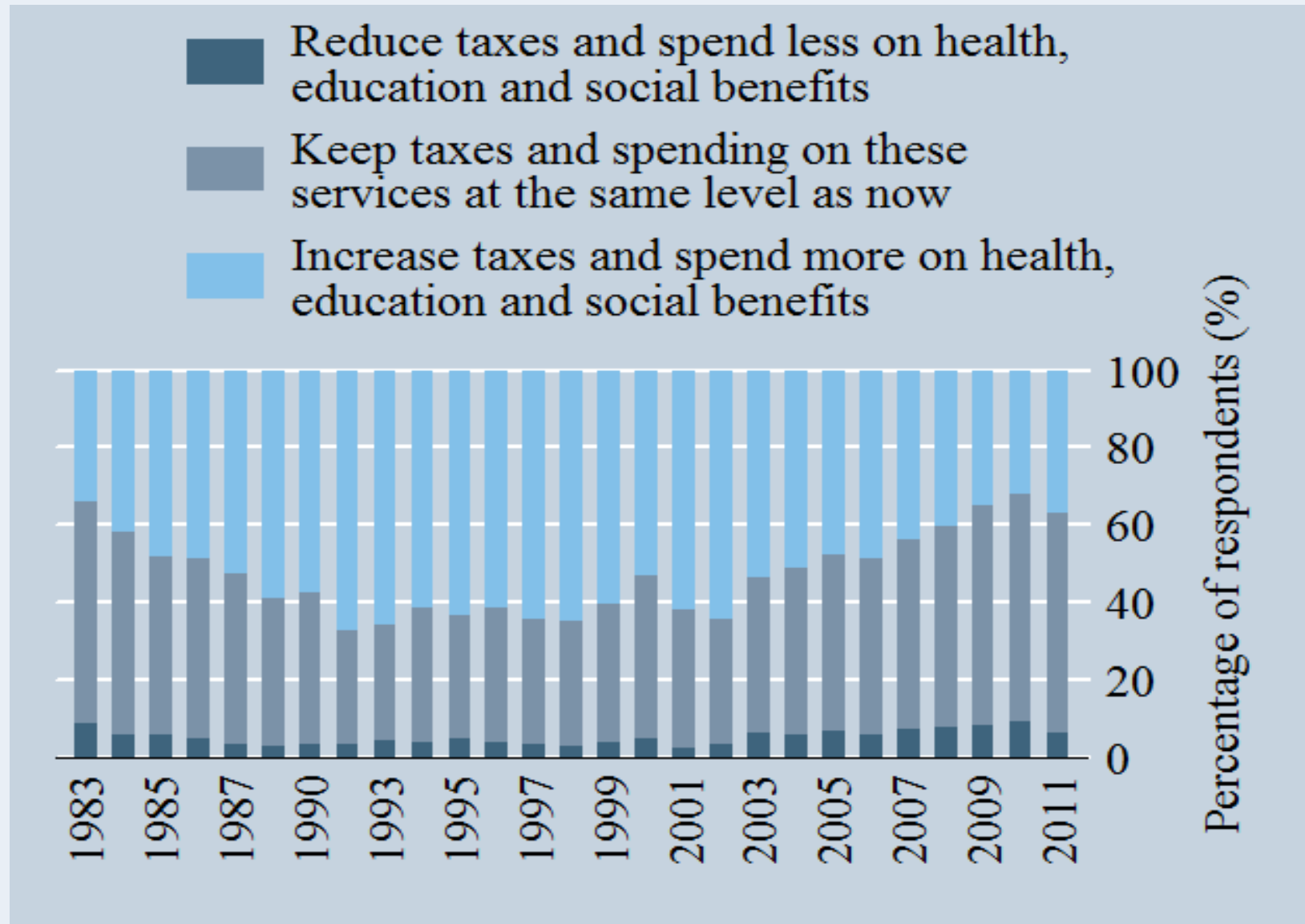
# Total Debt in the UK

National Health Service  
founded, 1948

% of GDP



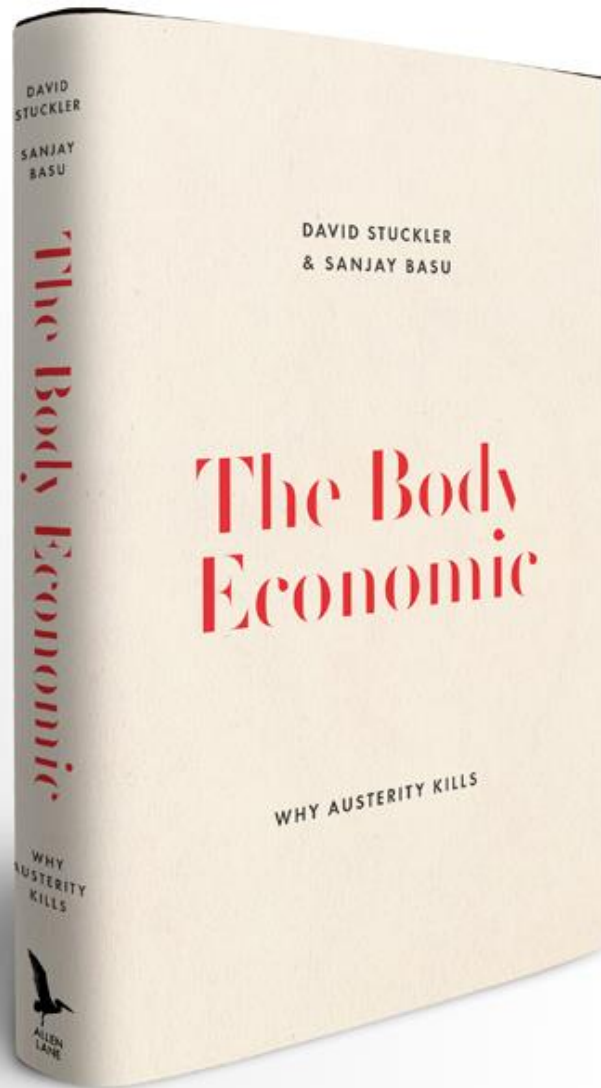
# What do people say?



# **New New Deal**

1. 'First do no harm'
2. Help people return to work
3. Invest in public health



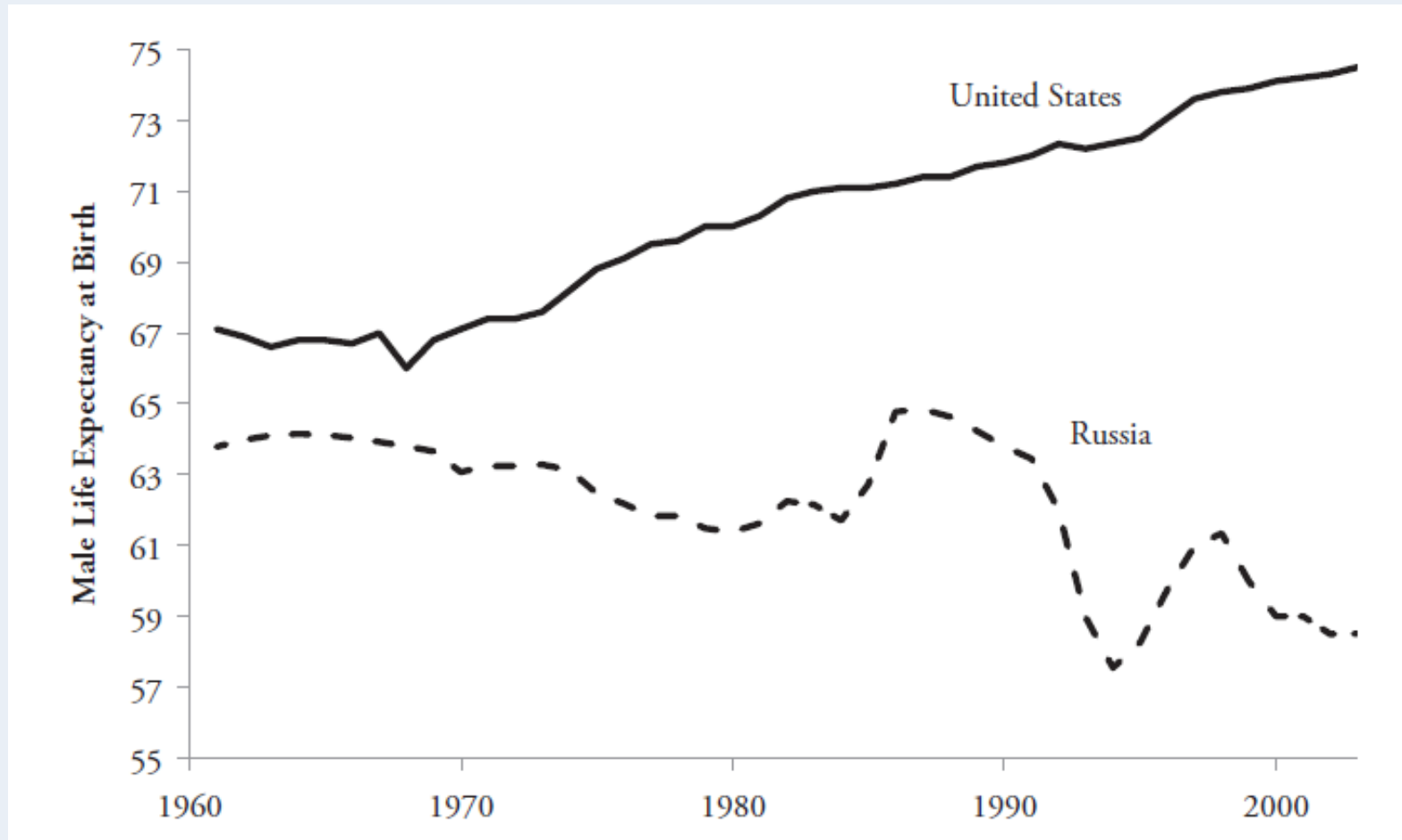


Twitter:  
[@davidstuckler](https://twitter.com/davidstuckler)

Email:  
[david.stuckler@chch.ox.ac.uk](mailto:david.stuckler@chch.ox.ac.uk)

# Appendix Slides

# The Post-Communist Mortality Crisis



Source: Stuckler and Basu, The Body Economic

# The Role of Alcohol



# The Role of Shock Therapy

“Despite economists’ reputation for never being able to agree on anything, there is a striking degree of unanimity in the advice that has been provided to the nations of Eastern Europe and the former Soviet Union (FSU). The legions of economists who have descended on the formerly Communist economies have provided advice very similar ... The three “-ations”—privatization, stabilization, and liberalization—must all be completed as soon as possible.”

Lawrence Summers (1994: 252-253)

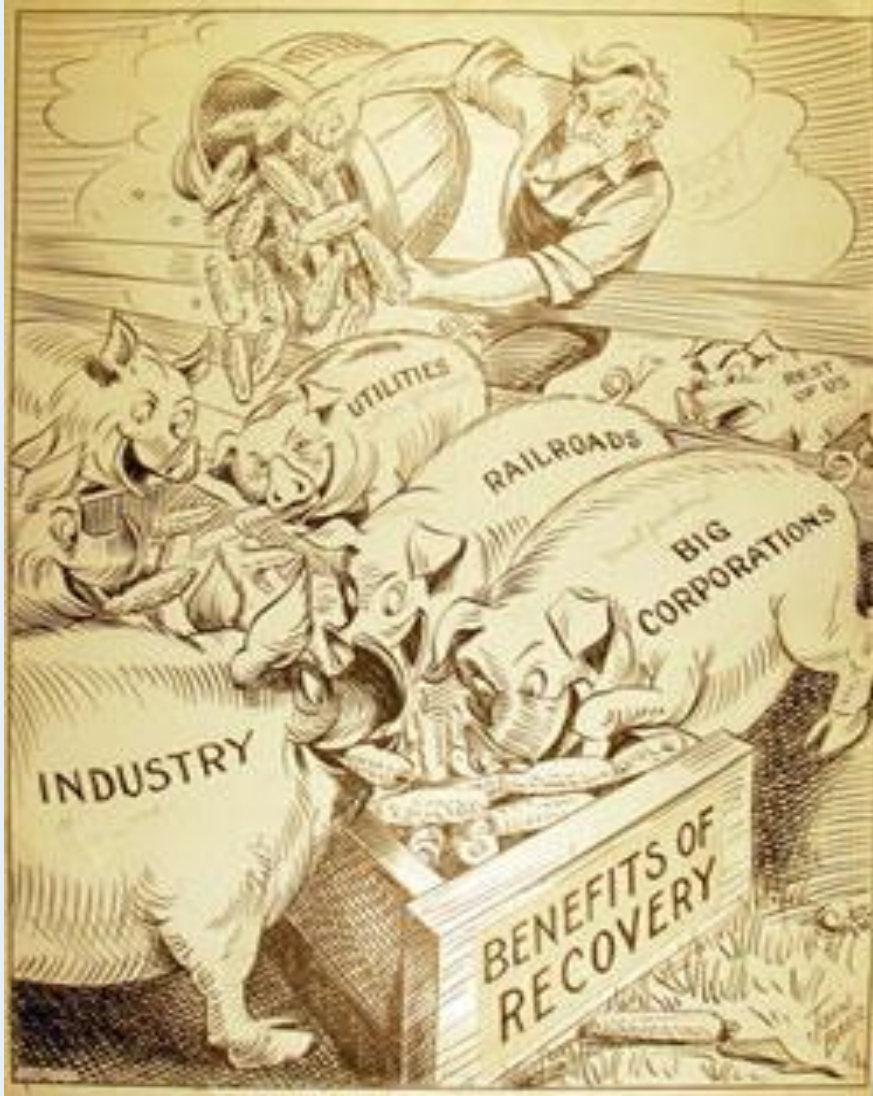
# Radical nationalism



photo: Giorgos Moutafis



# Who wins and loses?

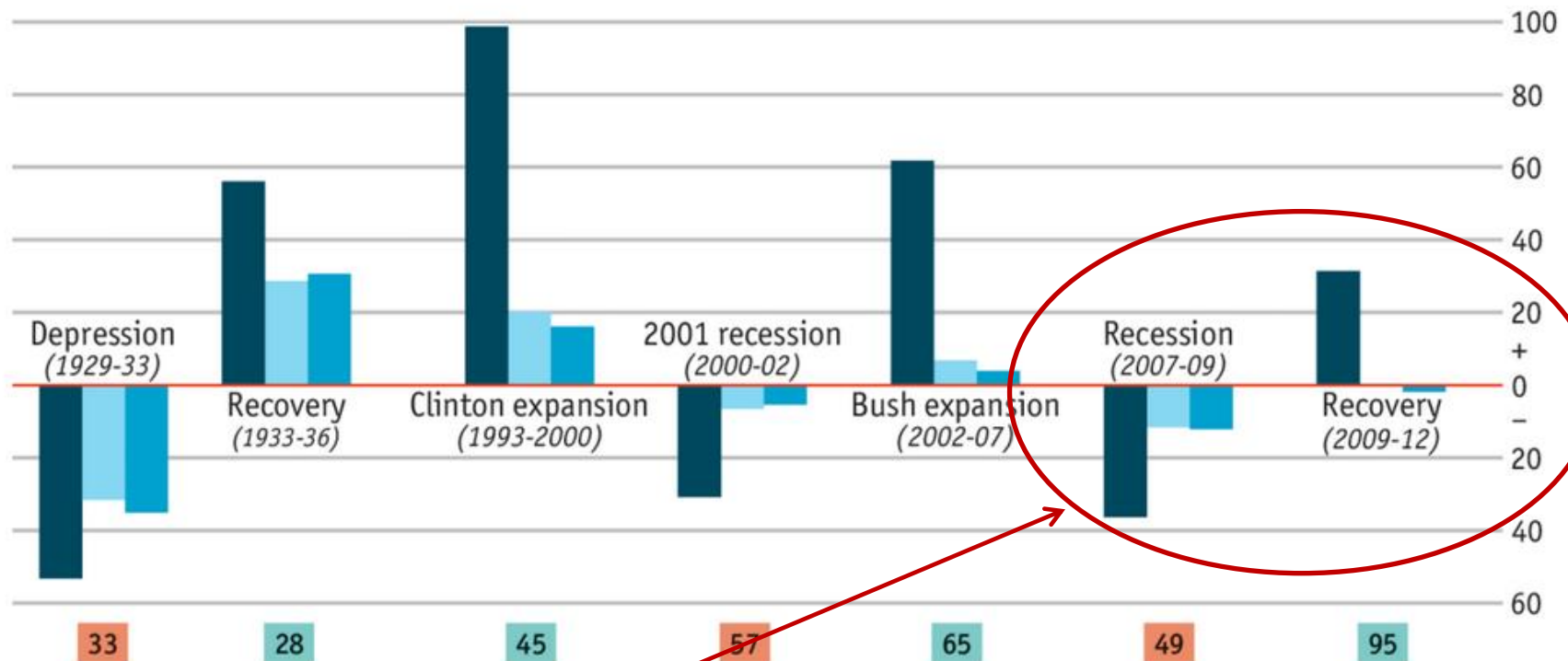


# 1%

## The change in real American income

For selected income groups, %

Top 1% Bottom 99% Bottom 90%

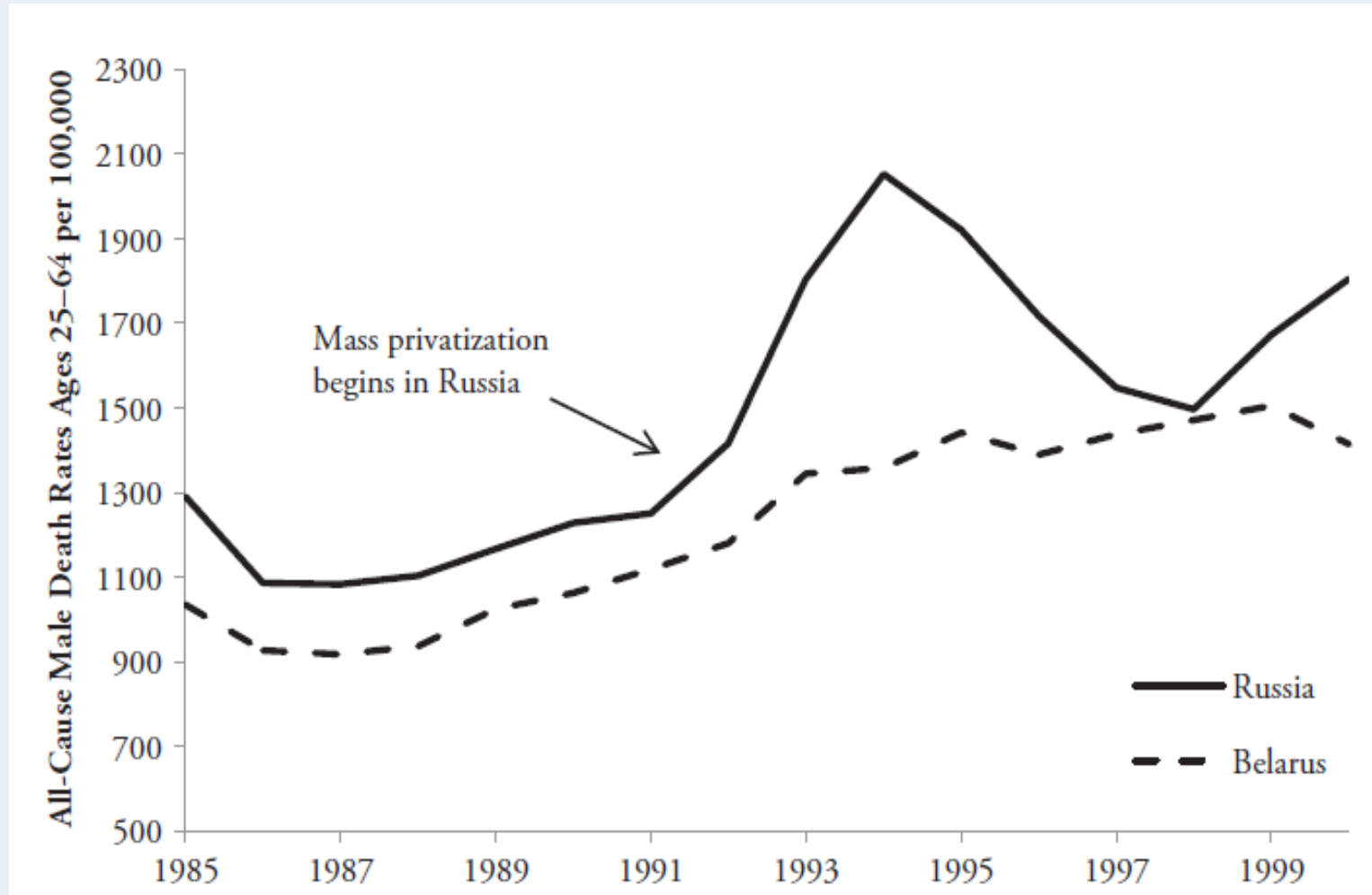


- 95% of recovery has gone to richest 1% of the population

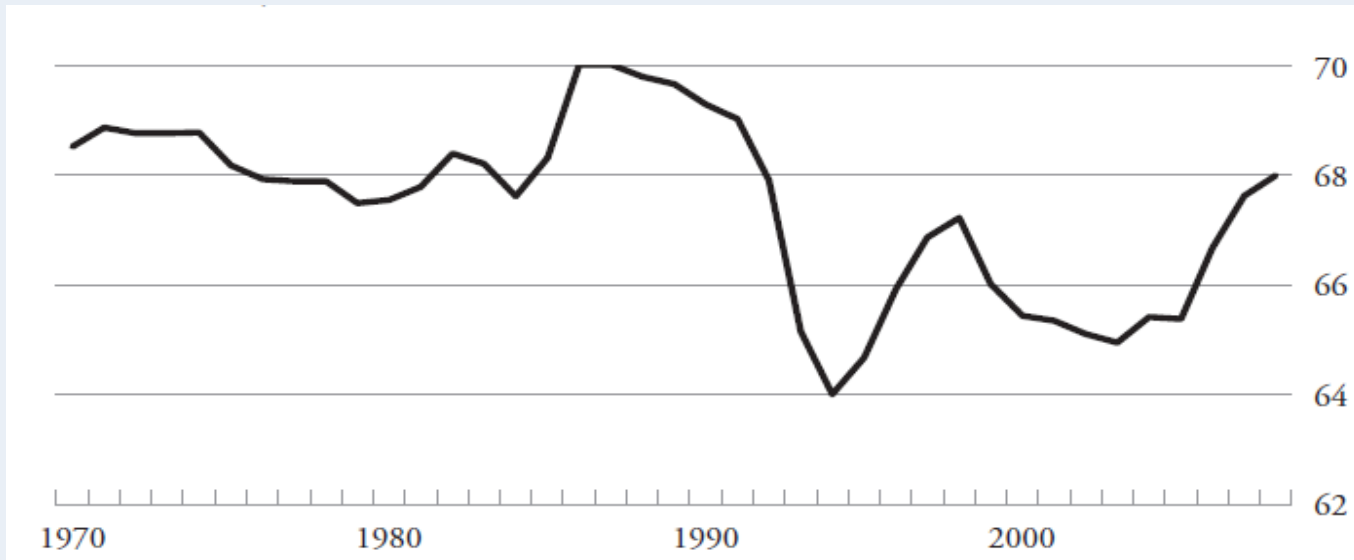
Source: The Economist



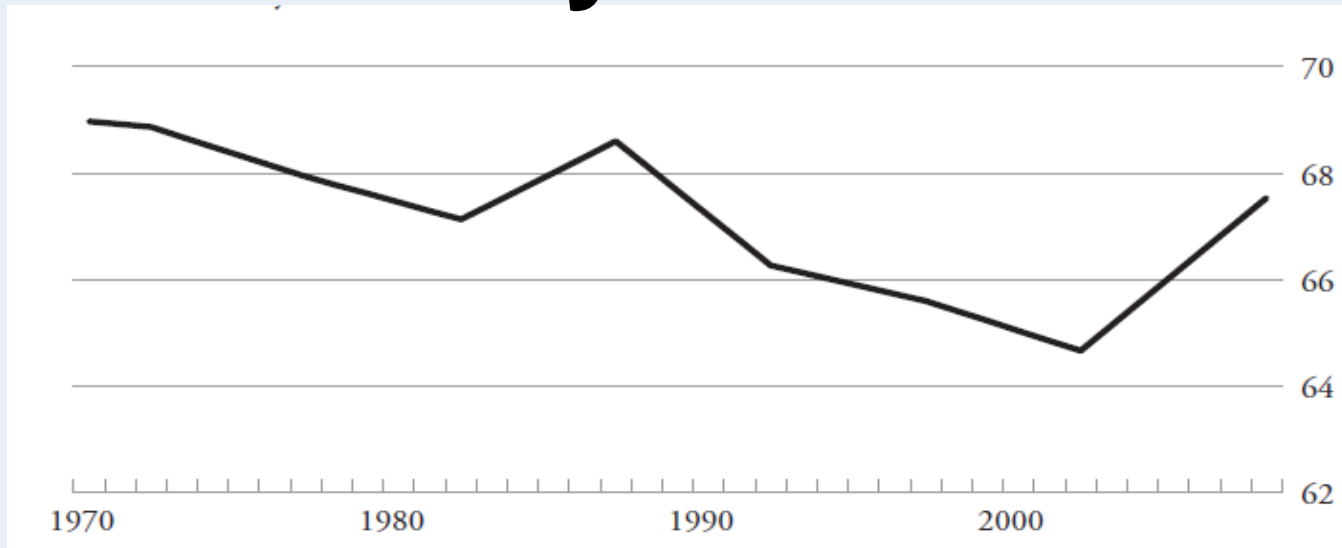
# Russia and Belarus, early 1990s



# Real data, our graph



# As seen by The Economist



# Spain and Sweden

**Suicide**

---

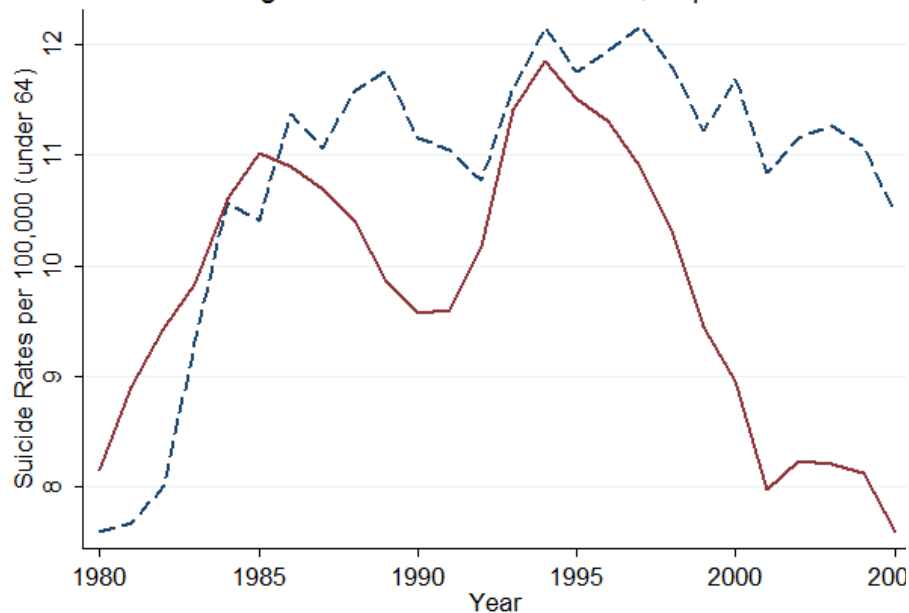
**Unemployment**

—

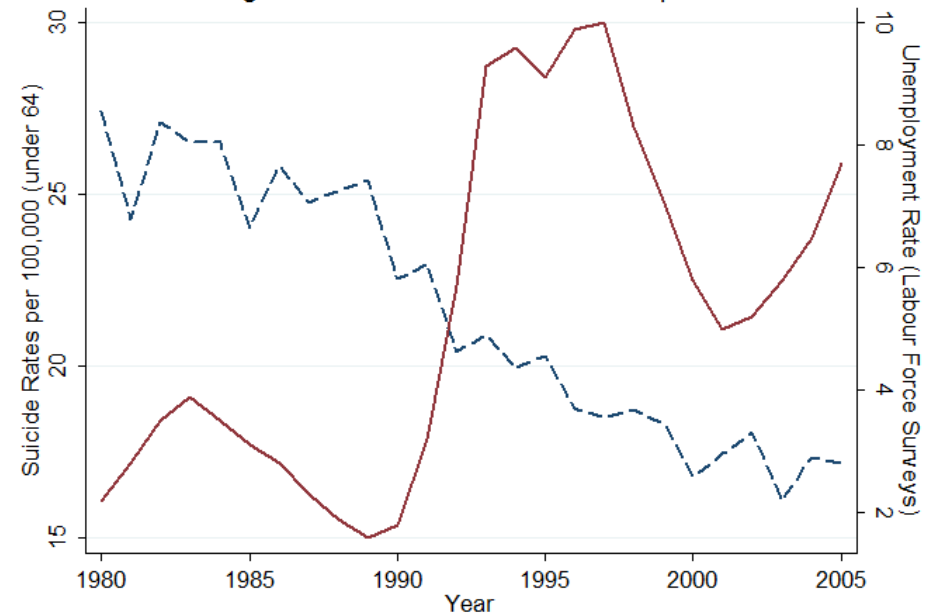
Spain

Sweden

Average Labour Market Protection: \$88 per head



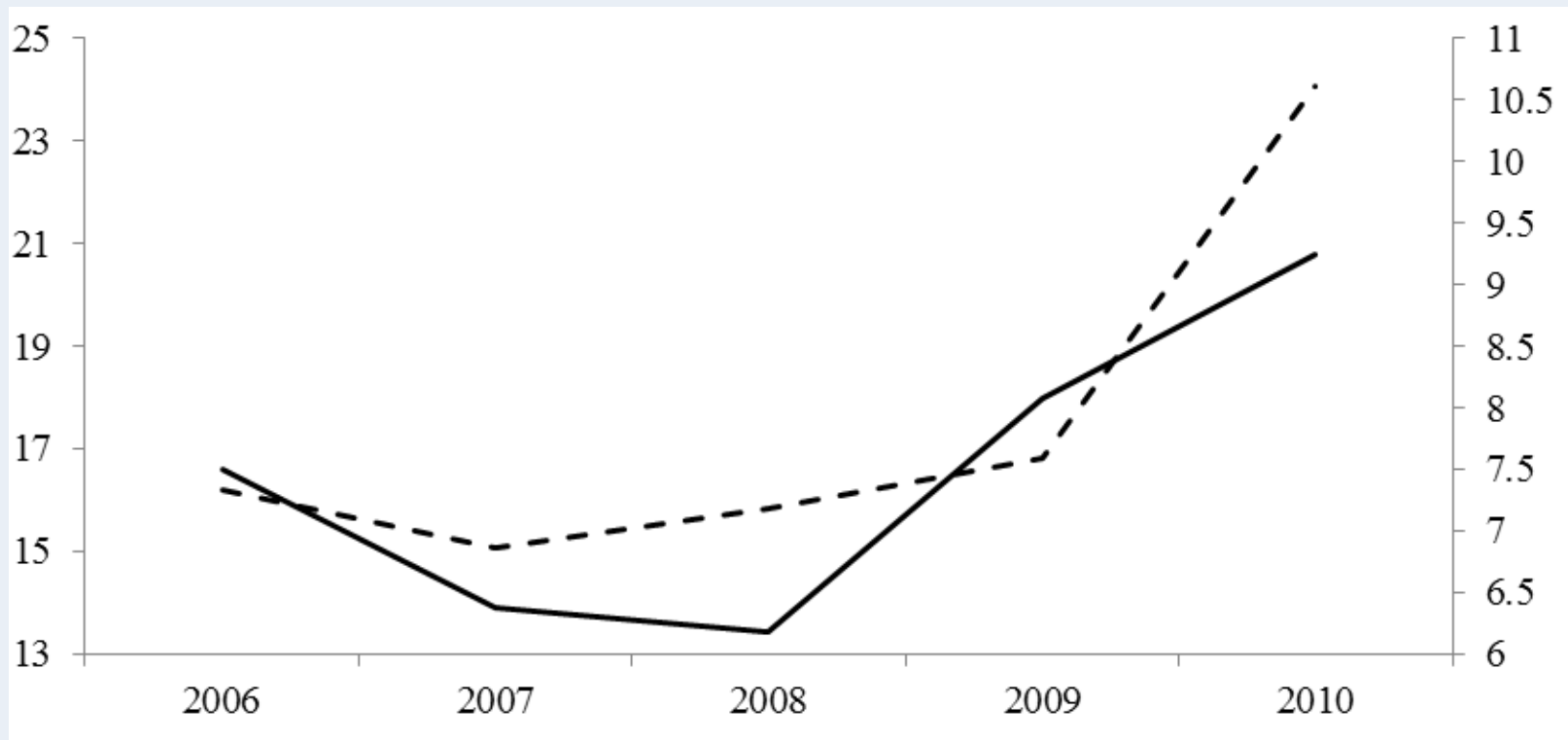
Average Labour Market Protection: \$362 per head



# Role of Active Labour Market Programmes

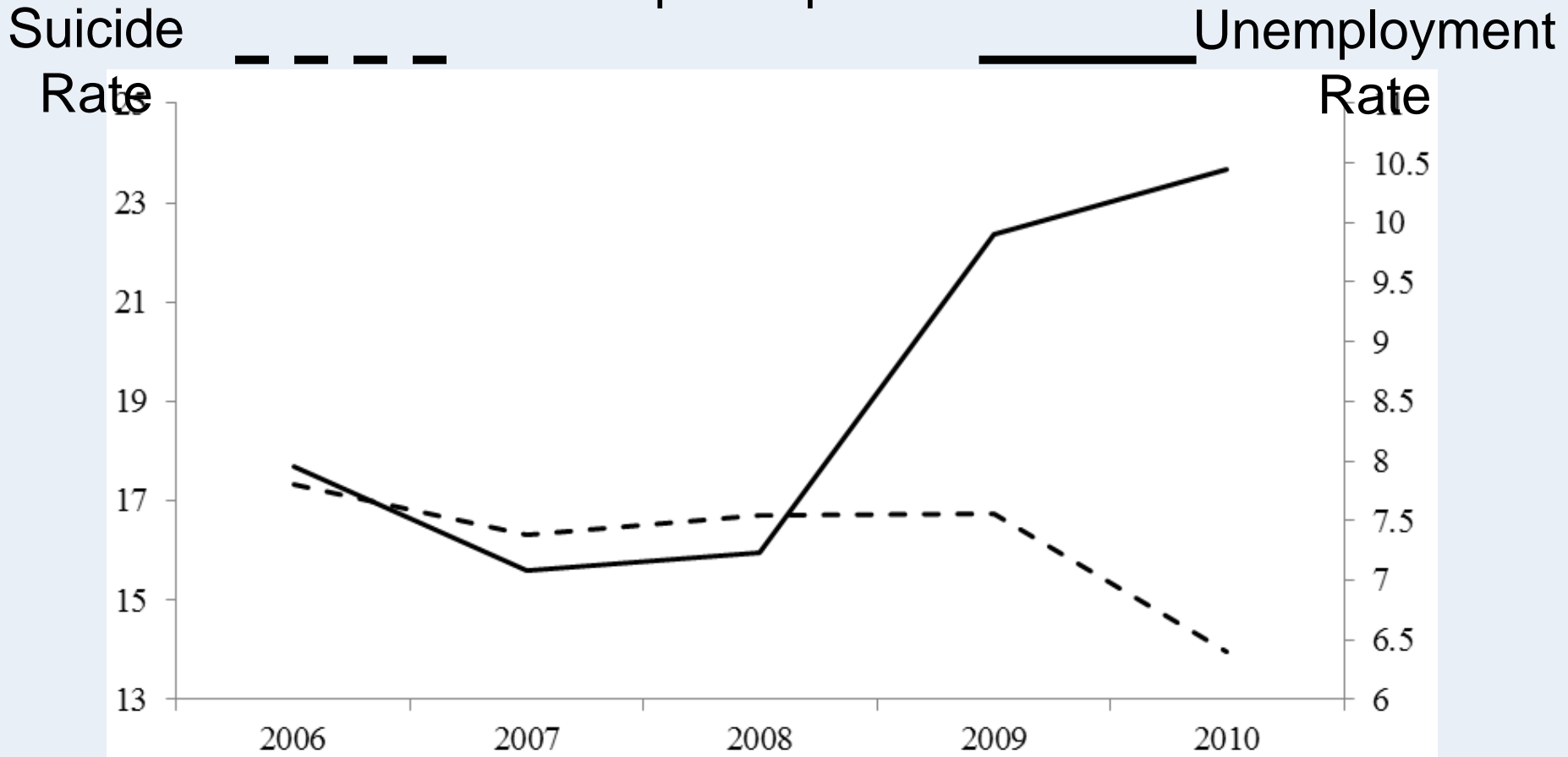
Below Median Spending  
<€100 per capita

Suicide Rate      Unemployment Rate

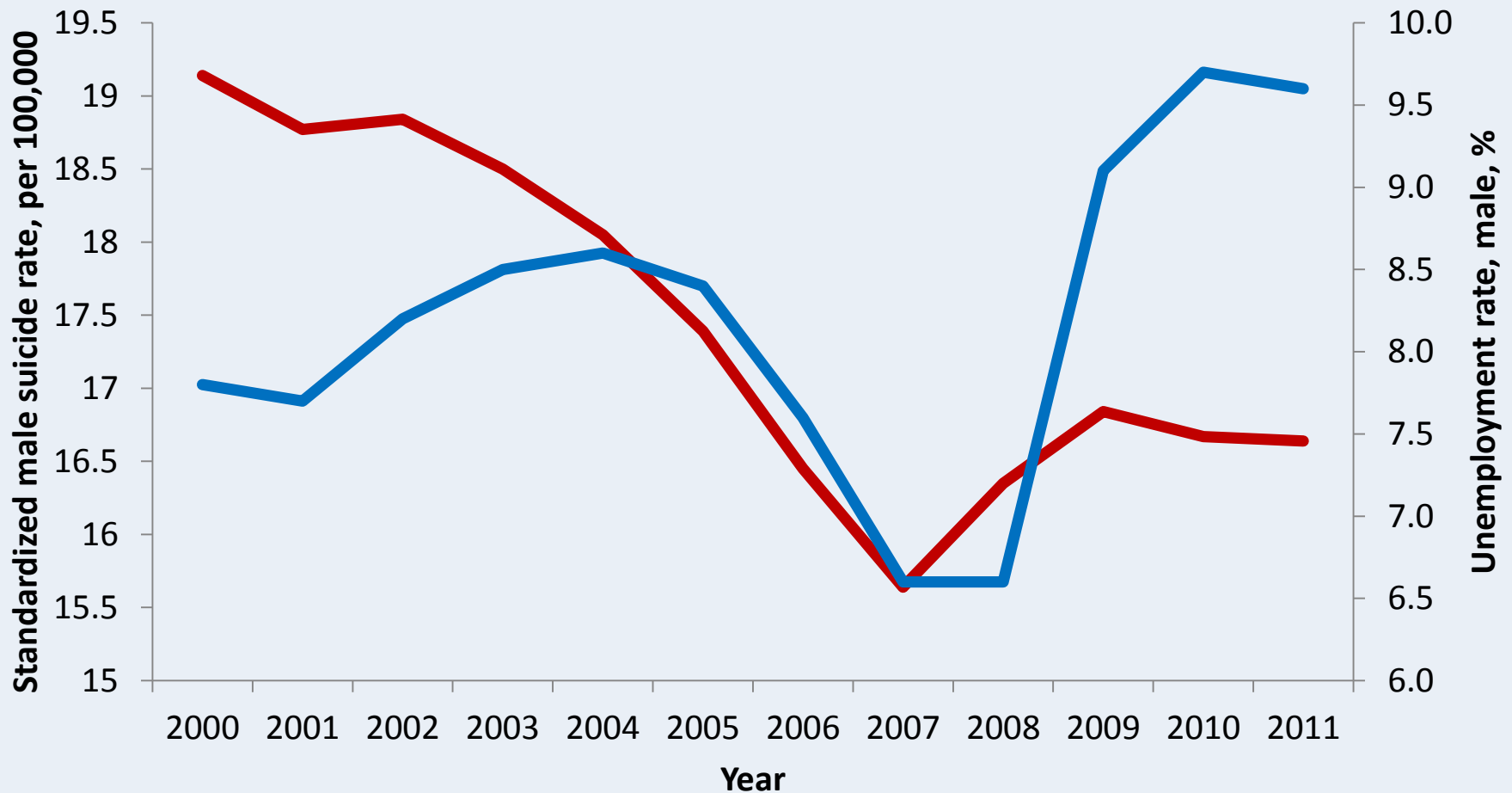


# Role of Active Labour Market Programmes

Above Median Spending  
>€100 per capita



# The effects of austerity: suicides and unemployment in the EU

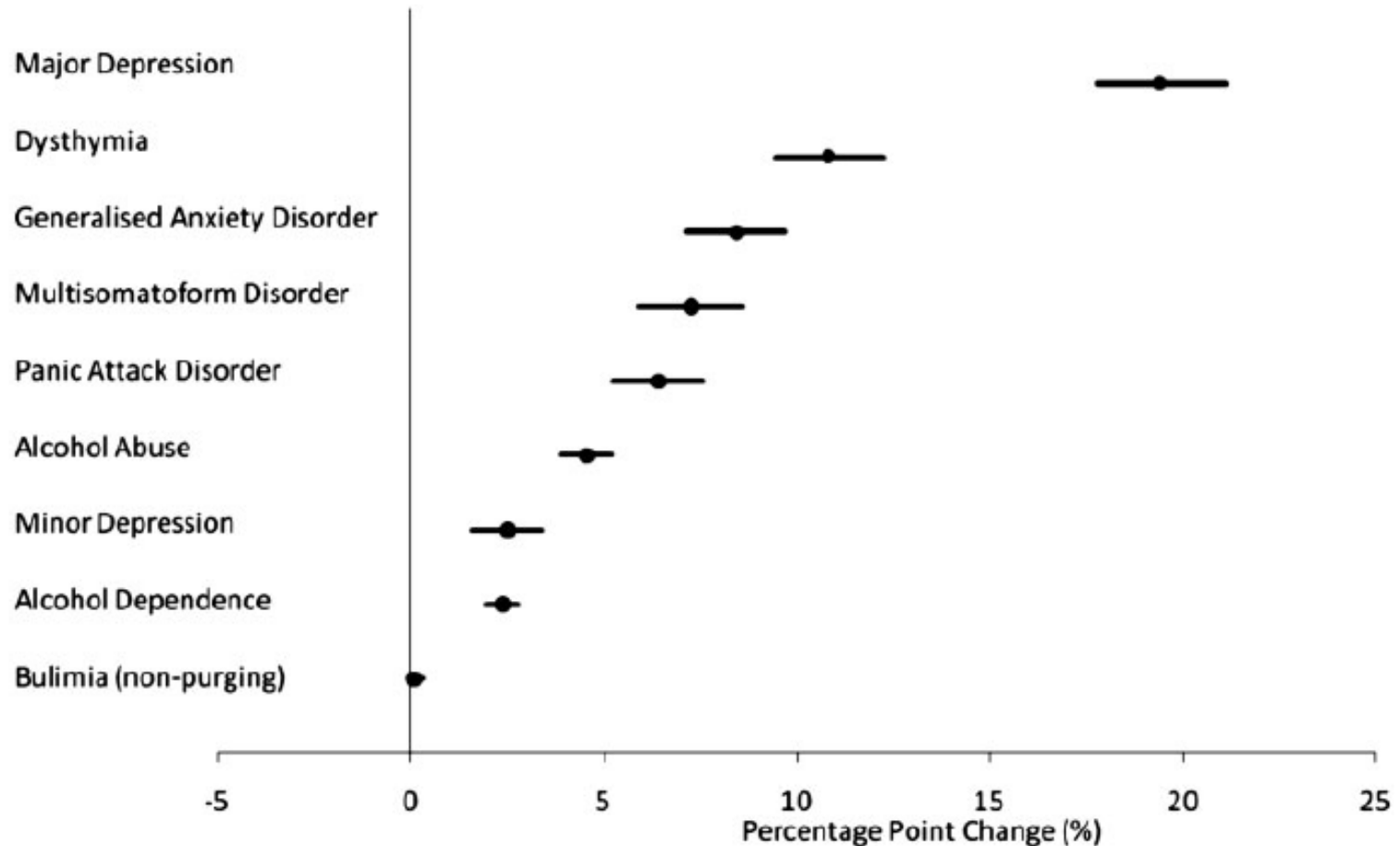


Standardized suicide mortality rate, per 100,000

Unemployment rate, male, % of the labour force

# Spain Mental Health Crises

## Prevalence Change, 2006 to 2010



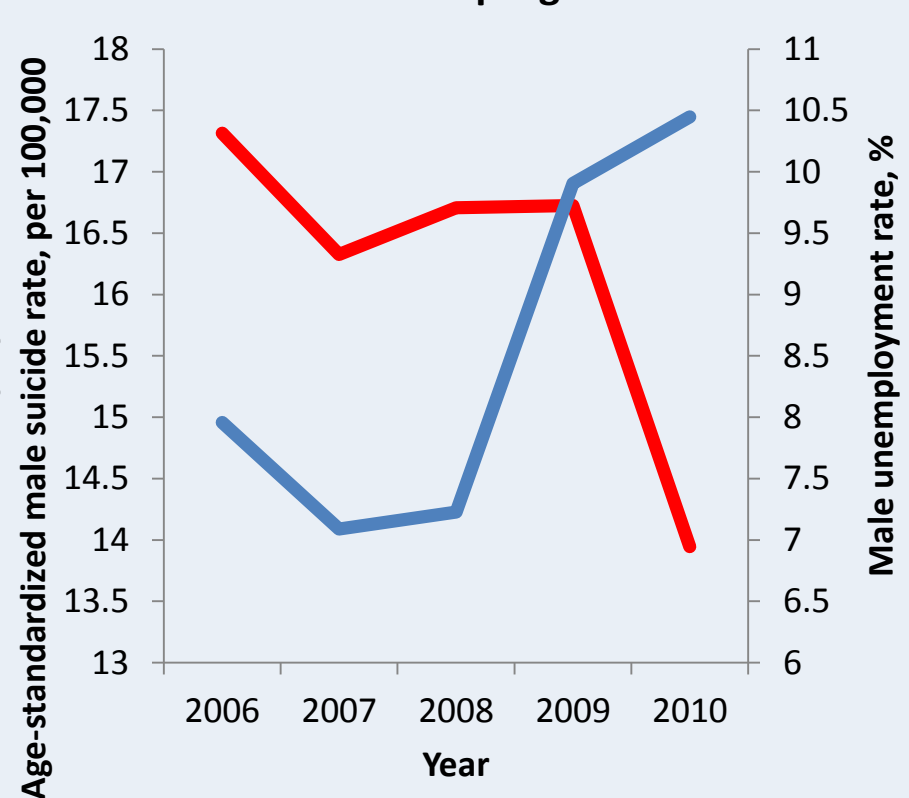
- 1.7-fold greater risk of depression in unemployed
- 3.0-fold greater risk in mortgage payment problems

# But something can be done

Low spending (<USD \$ 135) on active labour market programmes



High spending (>USD \$135) on active labour market programmes



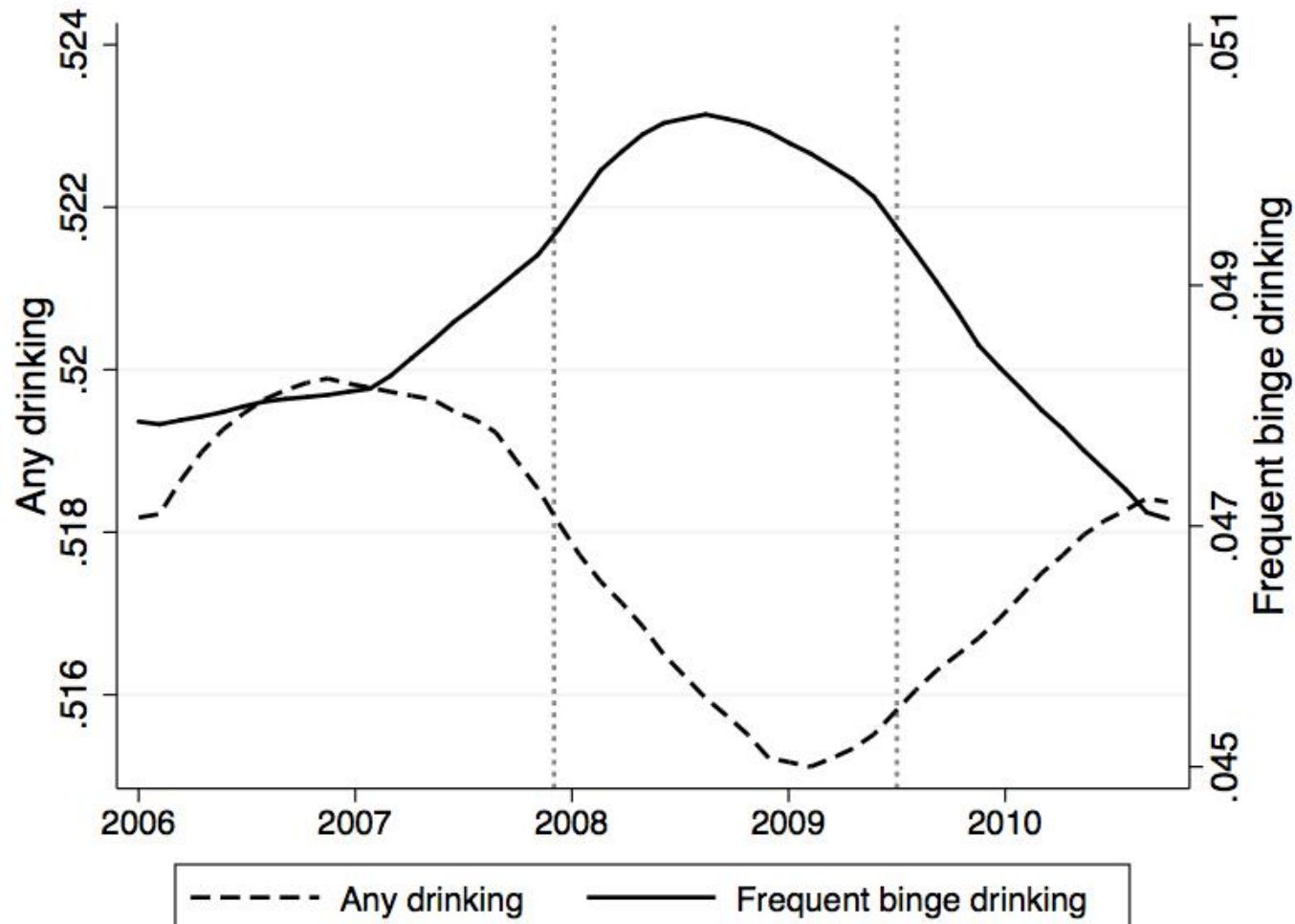
— Age-standardized male suicide rate, per 100,000  
— Male unemployment rate, %

— Age-standardized male suicide rate, per 100,000  
— Male unemployment rate, %



# Understanding Resilience

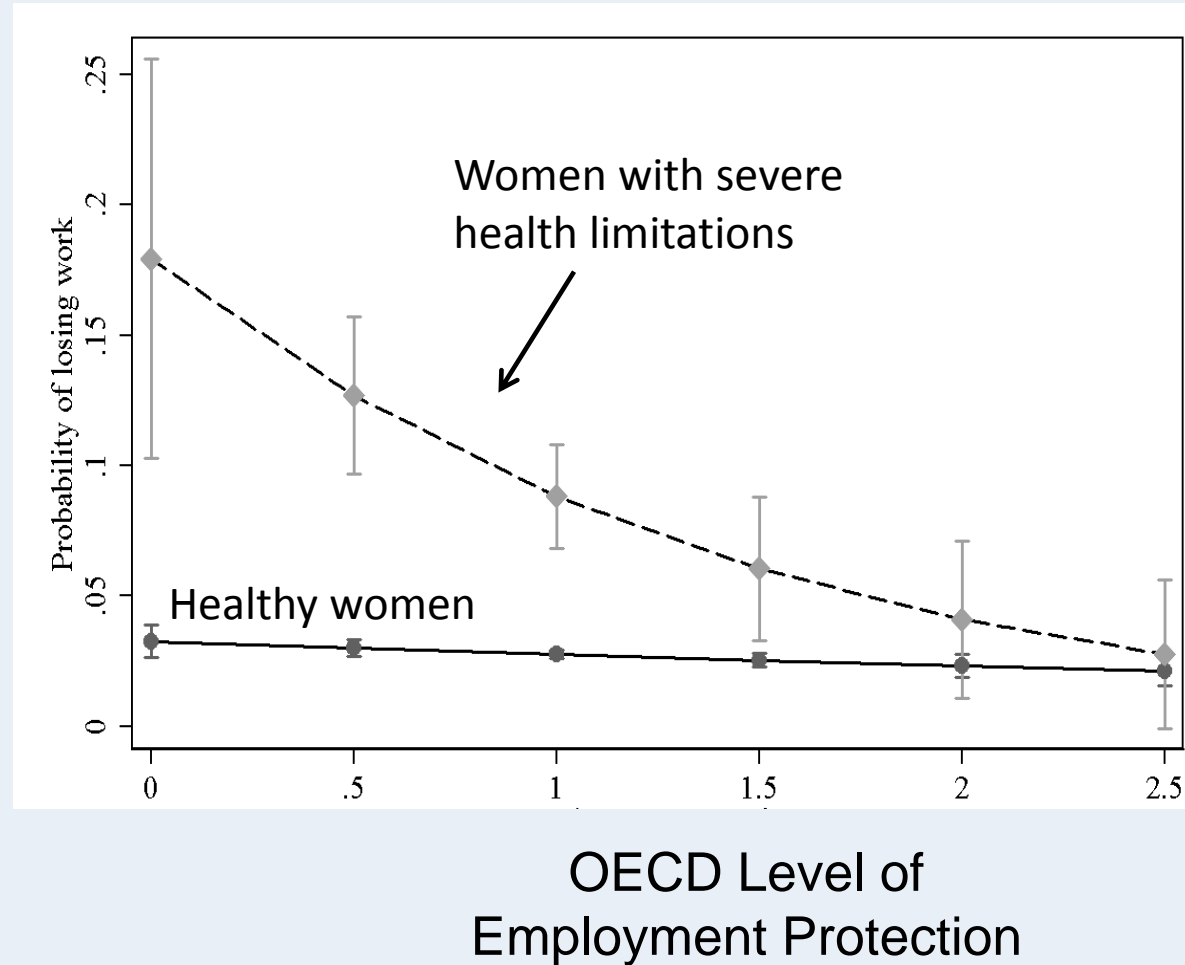
## Changes in drinking behaviours: USA



# Focusing on Vulnerable Groups

Persons in ill health 3 times more likely to lose jobs...

... but making it harder can eliminate these unfair inequalities



# Working with Allies



Health 2020:  
a European policy framework  
supporting action across government  
and society for health and well-being

## Priority areas:

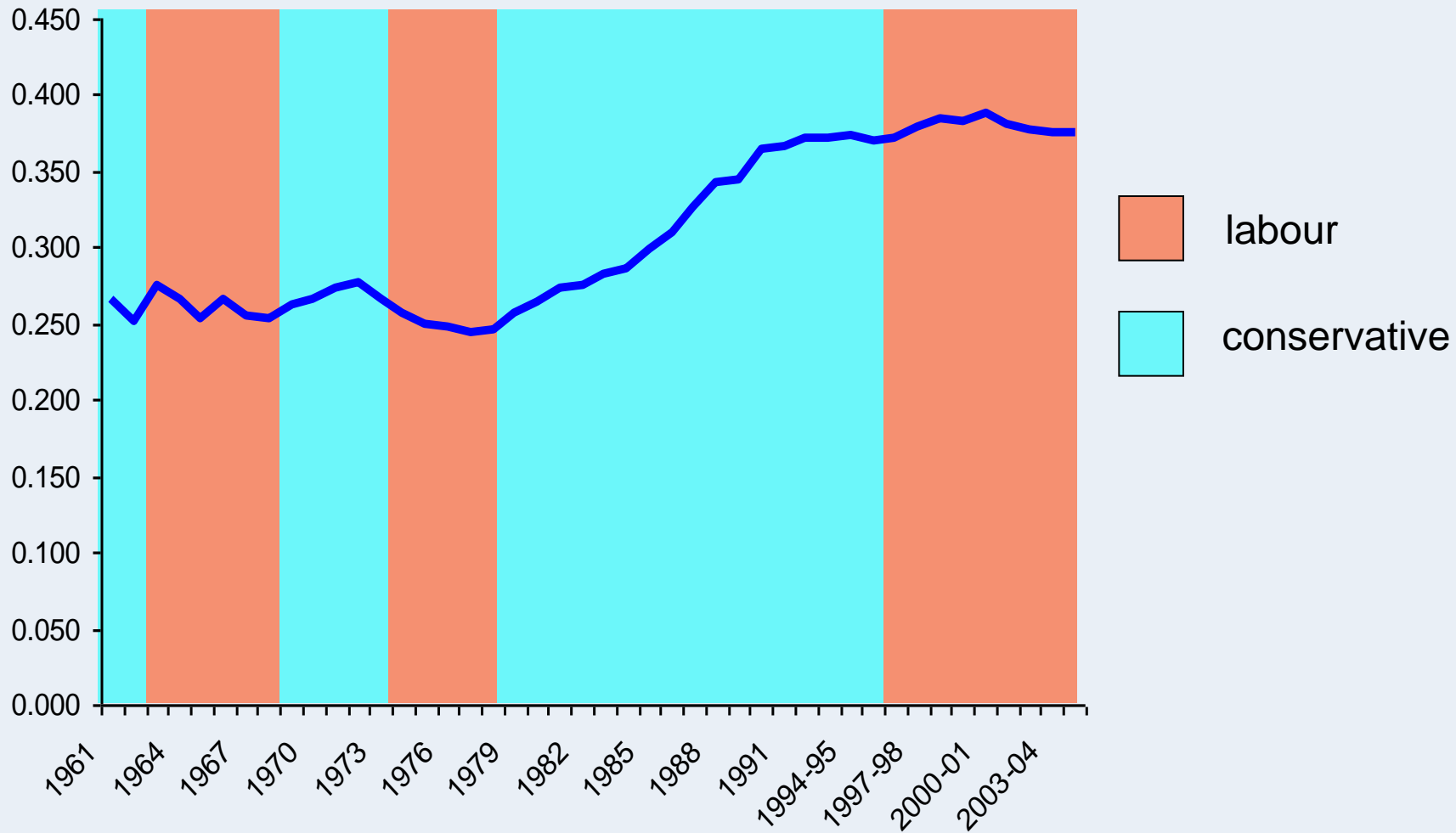
- preschool education
- educational performance
- employment and working conditions
- social protection
- reducing poverty

# Social protection expenditure

- “the provision by public (and private) institutions of benefits to, and financial contributions targeted at, households and individuals in order to provide support during circumstances which adversely affect their welfare.”
- Includes spending related to:
  - family support programmes (such as preschool education, child care, and maternity or paternity leave),
  - old age pensions and survivors benefits,
  - health care,
  - housing (such as rent subsidies),
  - unemployment benefits,
  - active labour market programmes (to maintain employment or help the unemployed obtain jobs), and support for people with disabilities.

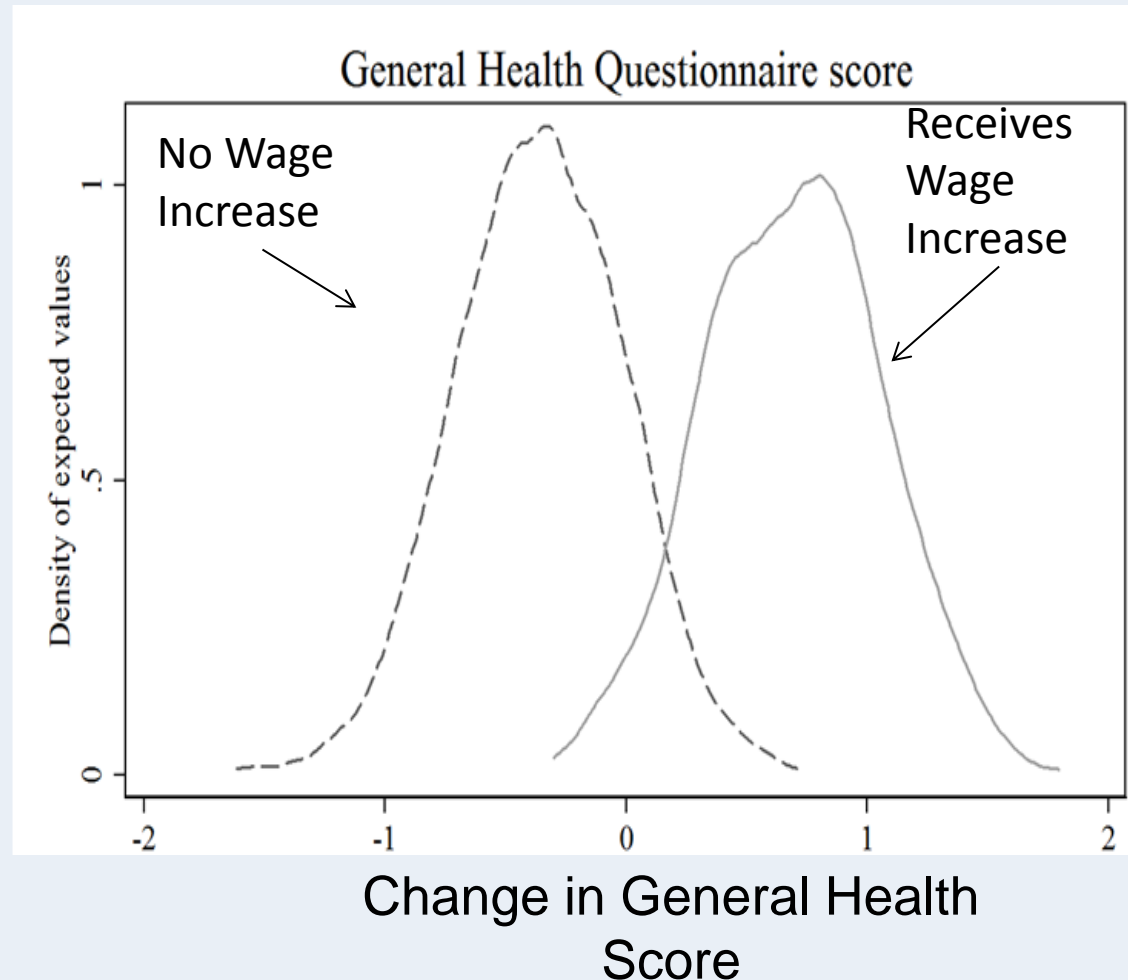
# Voting!

Gini coefficient  
(income after housing costs) in UK



# Another natural experiment: National Minimum Wage

- Tony Blair implements minimum wage in April 1999
- Increases wages 20%
- Not all firms comply
- Causal reduction in symptoms of depression



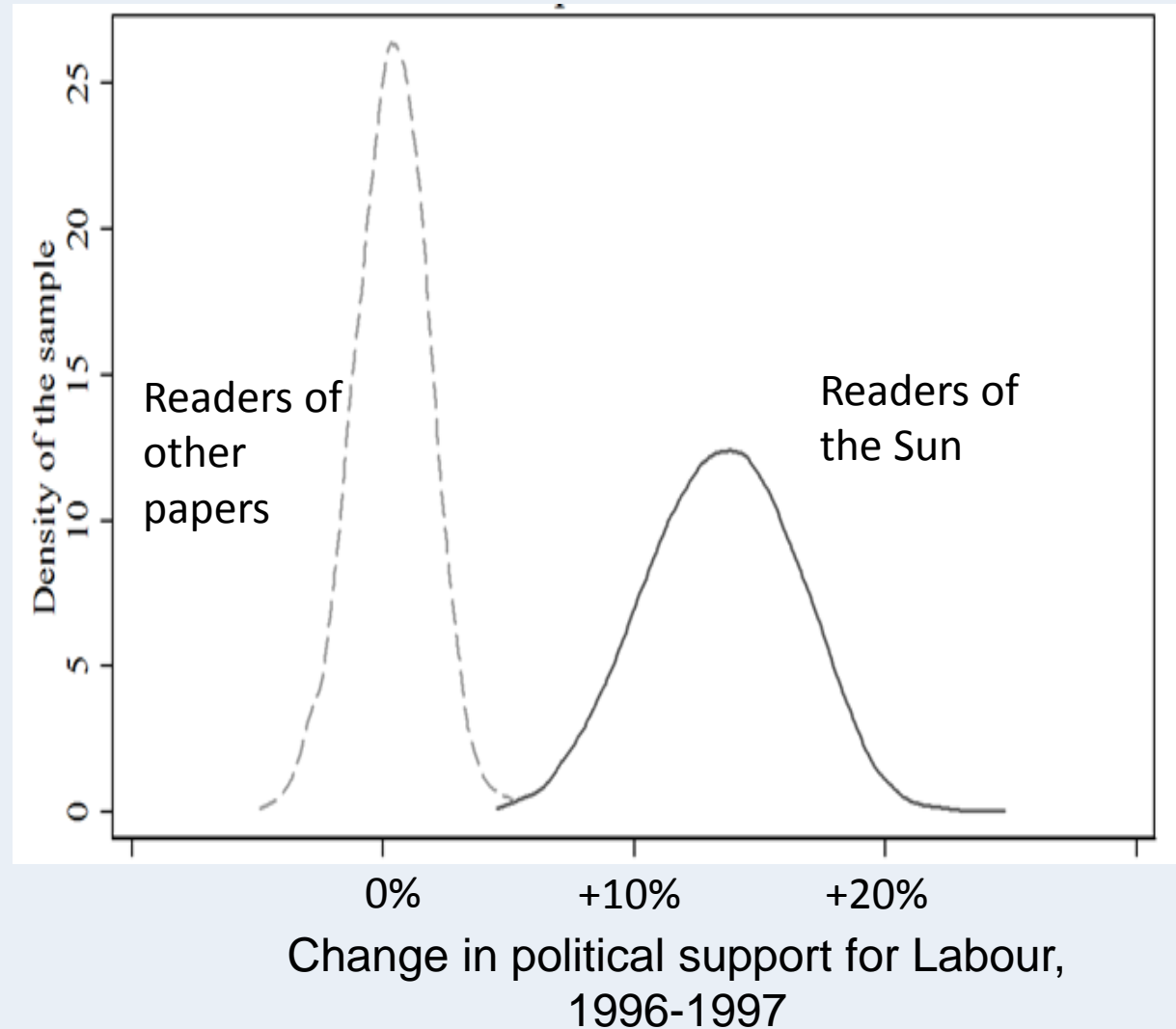


# Engaging the Media



# A natural media experiment

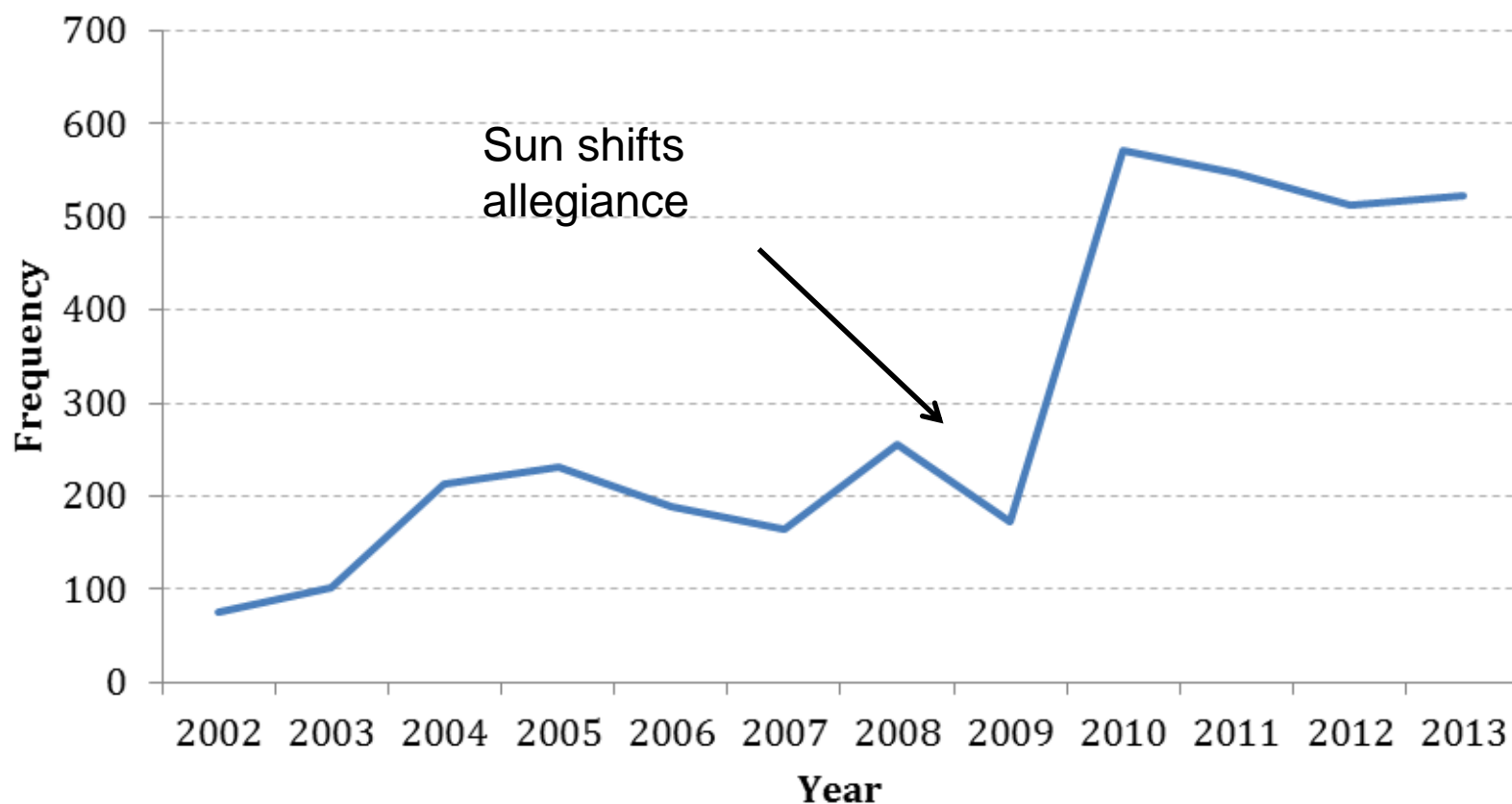
- 15% increase in support for New Labour
- No change in non-NewsCorp readers
- 750,000 additional votes for Labour







### Number of times the term scrounger receives a 'major mention' by all newspapers



# Myth-busting

*The Economist:*  
Young Britons are classical liberals: as well as prizing social freedom, they believe in low taxes, limited welfare and personal responsibility. In America they would be called libertarians

theguardian

[News](#) | [Sport](#) | [Comment](#) | [Culture](#) | [Business](#) | [Money](#) | [Life & style](#) | [1](#)

Comment is free

## We are told Generation Y is hard-hearted, but it's a lie

Coalition and media claims of youth support for benefit cuts – a story Labour also believes – are contradicted by evidence

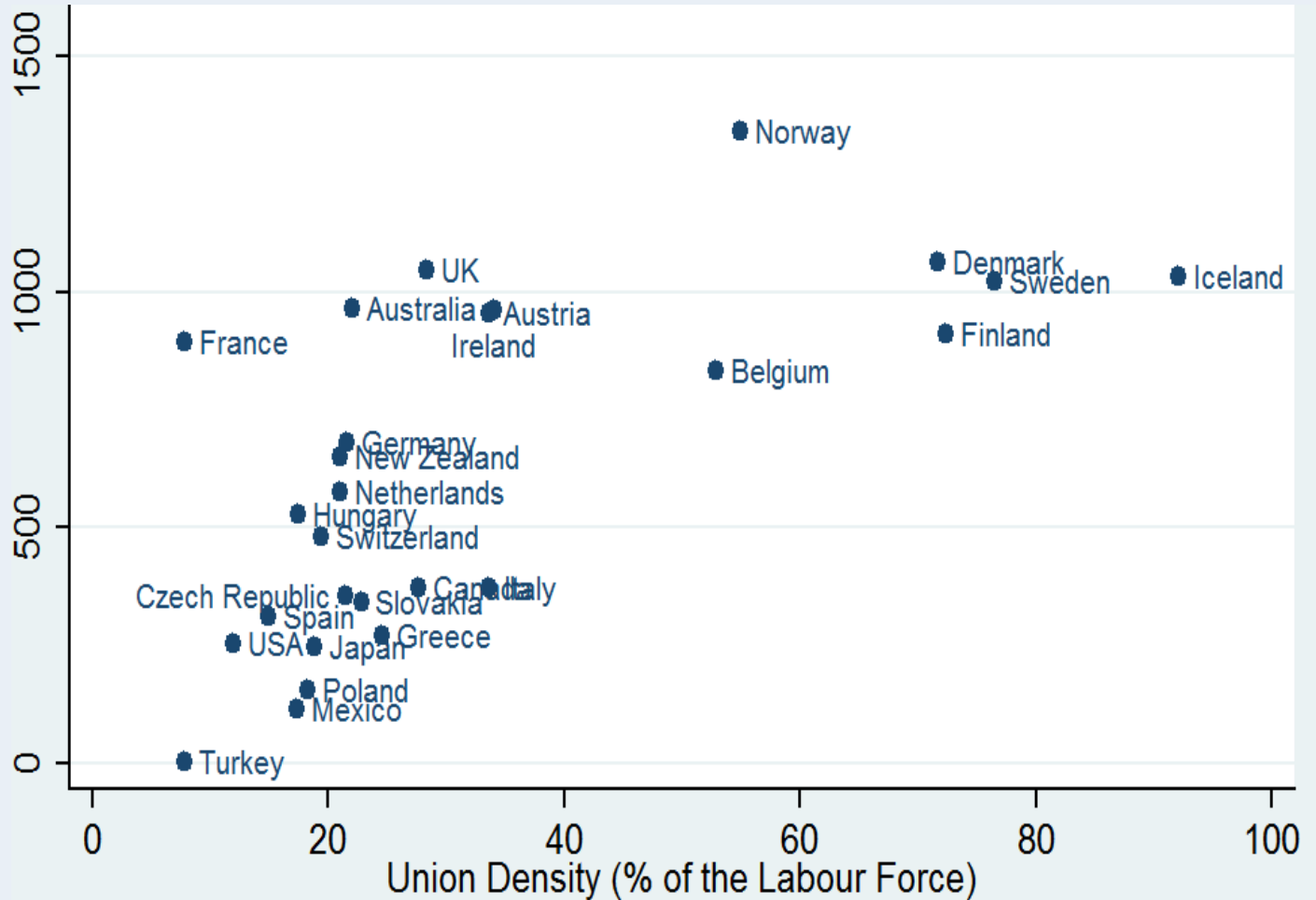
David Stuckler and Aaron Reeves

The Guardian, Tuesday 30 July 2013 19.12 BST



# Organise!

Social  
Protection  
Spending  
per capita  
(purchasing  
-power-  
parity,  
constant  
USD)





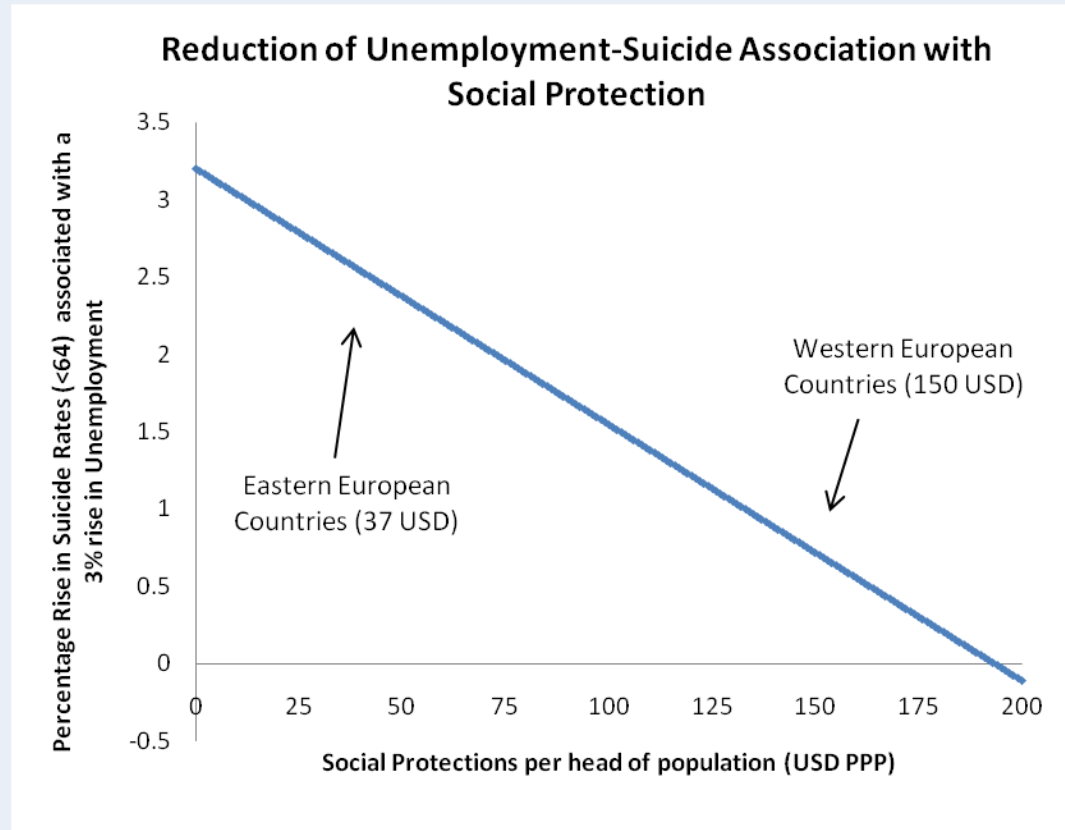
“Never doubt that a small group of thoughtful, committed citizens can change the world; indeed it is the only thing that ever has.”

- Margaret Mead

# Social Protections Help...

Each 100 USD greater social spending reduced the effect on suicides by:

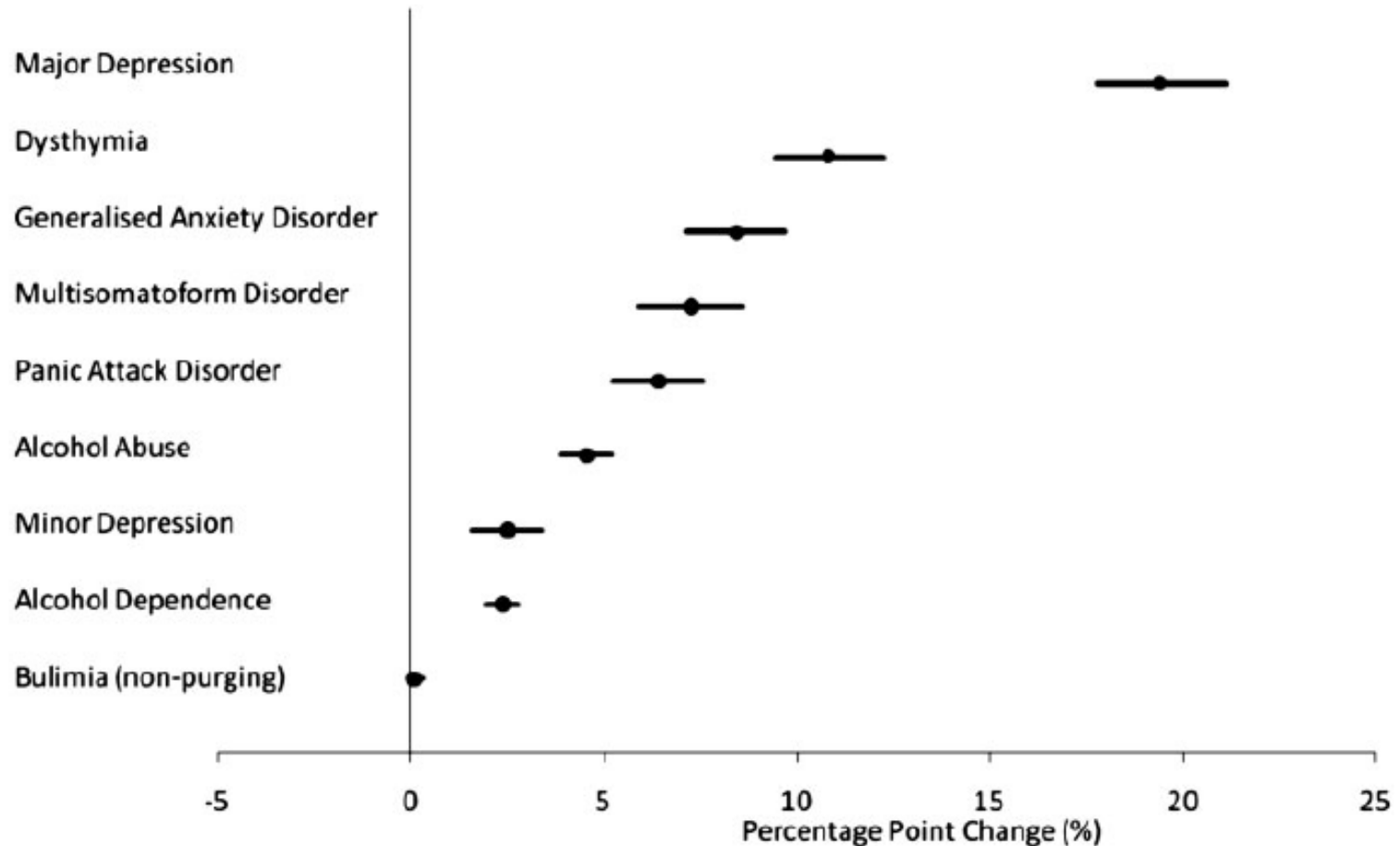
- 0.38%, active labour market programmes
- 0.23%, family support
- 0.07%, healthcare
- 0.09%, unemployment benefits



*Spending > 190 USD no effect of 3 percentage point rise in unemployment on suicide*

# Spain Mental Health Crises

## Prevalence Change, 2006 to 2010



- 1.7-fold greater risk of depression in unemployed
- 3.0-fold greater risk in mortgage payment problems



# The Great Depression

"Stock prices have reached what looks like a permanently high plateau."

*-Irving Fisher, economist,  
Oct 1929*





# Spain and Sweden

**Suicide**

---

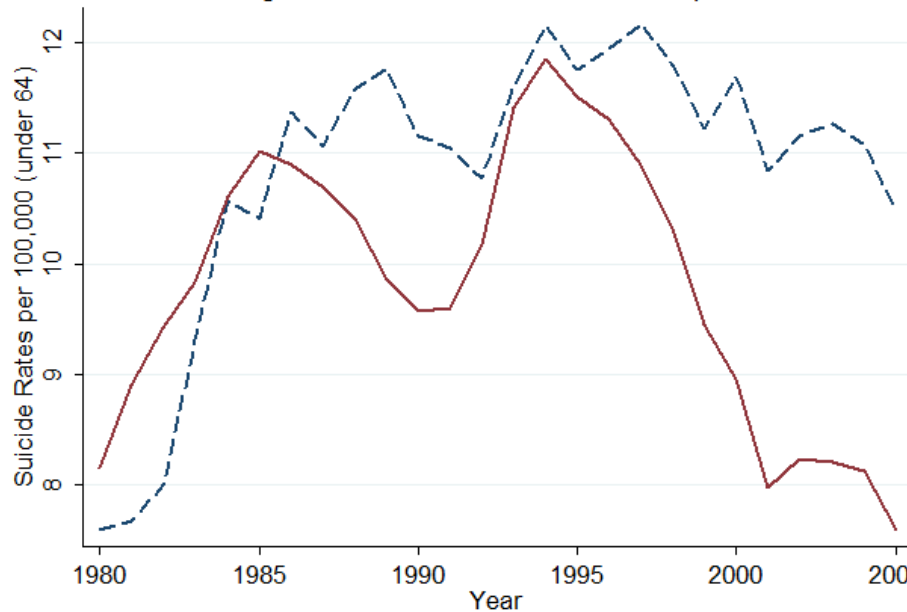
**Unemployment**

---

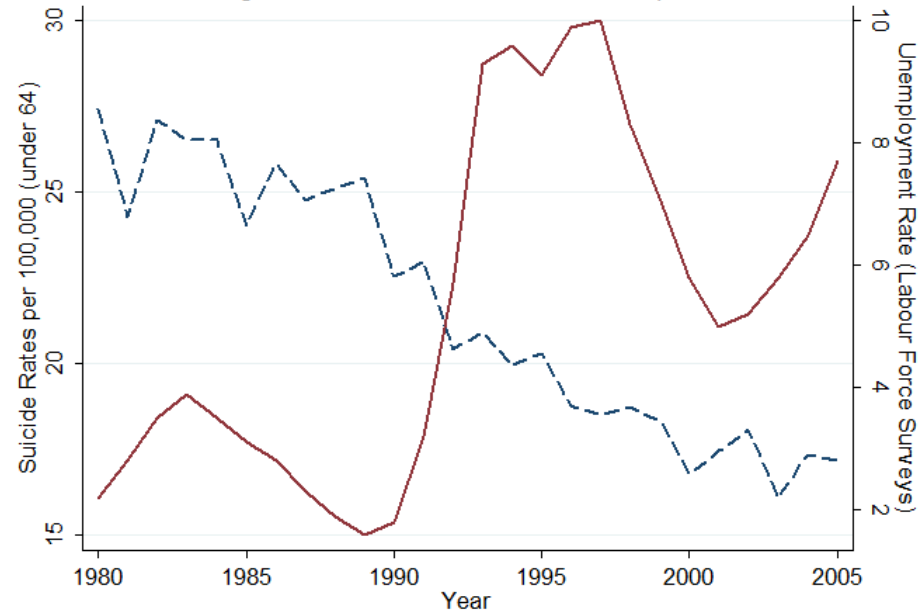
Spain

Sweden

Average Labour Market Protection: \$88 per head



Average Labour Market Protection: \$362 per head

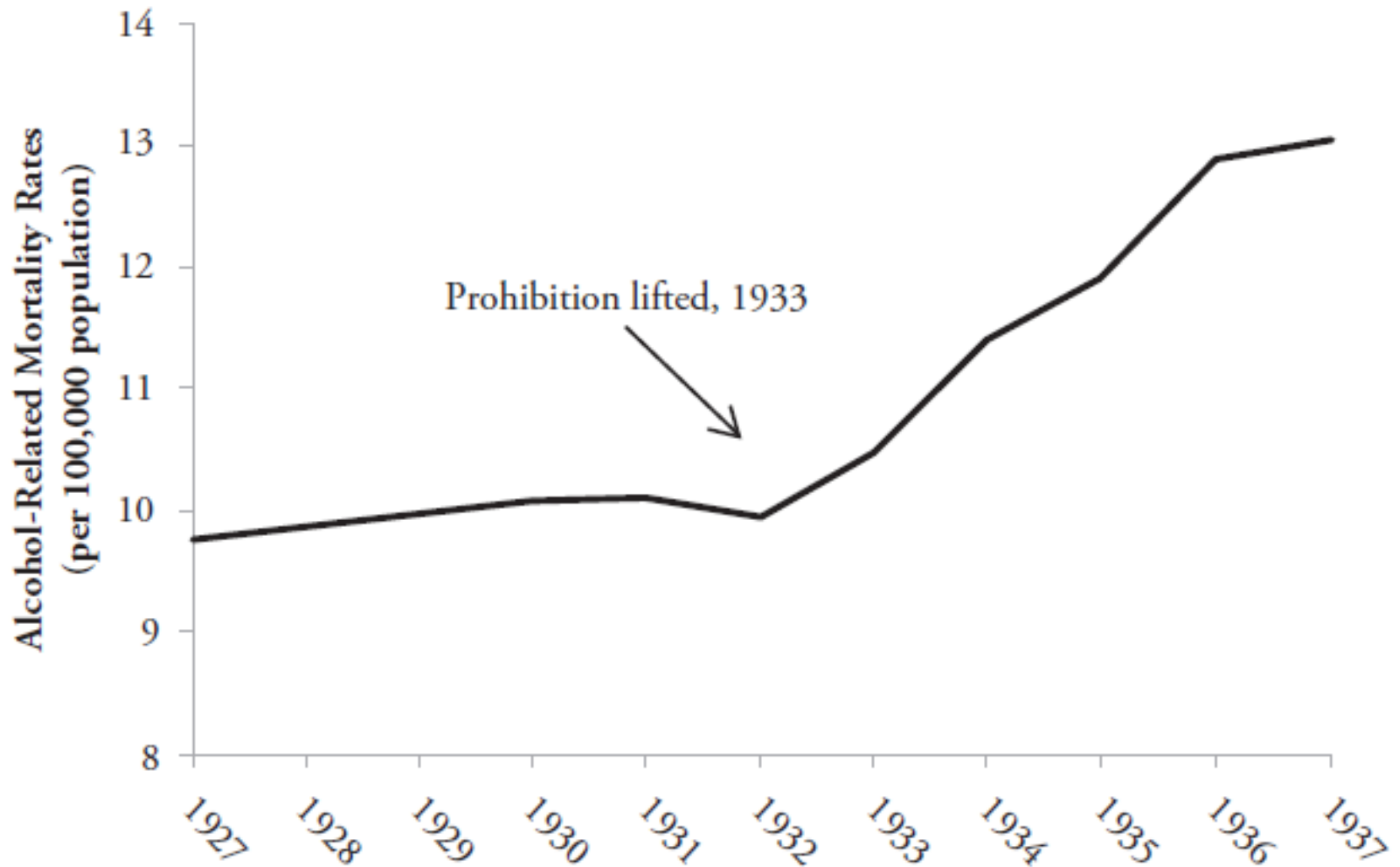


# The Volstead Prohibition Act



- Soon after women gained the right to vote
- Prohibition enacted in 1919
- 'Wet' and 'Dry' states
- Lifted in 1933


# Death Rates from Alcohol




# Eyjafjallajökull



# Increasing Asthma

 NCBI Resources ☐ How To ☐

 PubMed   
US National Library of Medicine  
National Institutes of Health [Advanced](#)

Display Settings: ☐ Abstract [Send to:](#) ☐


★ Performing your original search, *iceland asthma*, in PubMed will retrieve [93 records](#).


[Laeknabladid](#), 2011 Sep;97(9):463-7.

**[Prevalence of respiratory symptoms and use of asthma drugs are increasing among young adult Icelanders].**  
[Article in Icelandic]  
[Sigurkarlsson S](#), [Clausen M](#), [Gislason T](#), [Gislason D](#).

**Abstract**  
**INTRODUCTION:** In the year 1990 the European Community Respiratory Health Survey I (ECRHS I) demonstrated that the prevalence of these diseases was lowest in Iceland ([www.ecrhs.org](#)). In order to compare the prevalence of respiratory symptoms in Reykjavik over time, a new identical cross-sectional study was performed seventeen years later.  
**MATERIAL AND METHODS:** Both cohorts, were in the age group 20-44 years and randomly selected from the population in Reykjavik and suburbs. Both answered questionnaires about respiratory symptoms, nasal allergy and use of anti-asthmatic drugs. The second cohort was part of the EuroPrevall study ([www.europrevall.org](#)) performed in 2007.  
**RESULTS:** Response rate was lower in 2007 (999 or 43.2%) than in 1990 (2.903 or 80.6%). The prevalence of attacks of asthma increased over time from 2.2% to 6.7% ( $p < 0.0001$ ), use of anti-asthmatic drugs increased from 2.4% to 7.2% ( $p < 0.0001$ ) and nasal allergy symptoms from 17.8% to 29.3% ( $p < 0.0001$ ). There was an increase of all respiratory symptoms except wheezing or whistling, where the prevalence dropped from 18.0% to 14.4% ( $p < 0.01$ ). In the year 2007 women had more often been woken by attacks of coughing ( $p < 0.0001$ ), had more often attacks of asthma ( $p < 0.05$ ) and were more likely to use anti-asthmatic drugs ( $p < 0.05$ ) than men. Attacks of asthma and the use of anti-asthmatic drugs were more common among the younger age group in the year 2007. That was not seen in the year 1990.  
**CONCLUSION:** This study provides evidence of an increase in respiratory symptoms and use of anti-asthmatic drugs over a period of 17 years from 1990 among young adult Icelanders.

PMID: 21911911 [PubMed - indexed for MEDLINE]

 **Publication Types, MeSH Terms, Substances**

 **LinkOut - more resources**

**Figure 2.11 Average Positive Affect by Country - Part 1  
(GWP 05-11)**

