

Creating Healthy Cities: the role of green spaces

Jonna Monaghan

Health and Wellbeing Manager

Belfast Healthy Cities



Belfast Healthy Cities

Partnership  Belfast Health and Social Care Trust



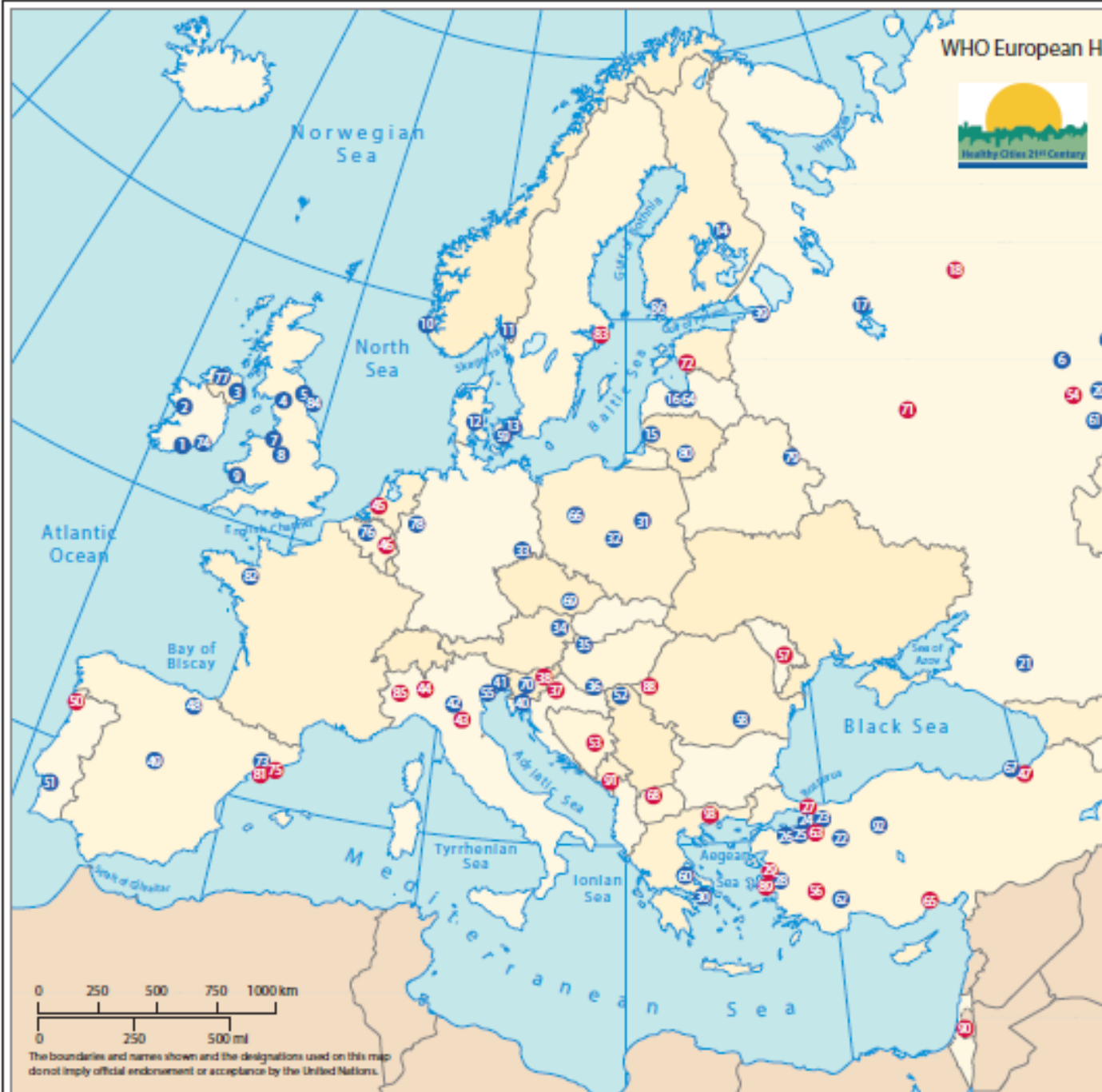
 Housing Executive

 Public Health Agency

Our Vision is to be a leader in creating a healthy and equitable city



WHO European Healthy Cities Network – Phase VI (2014–2018)

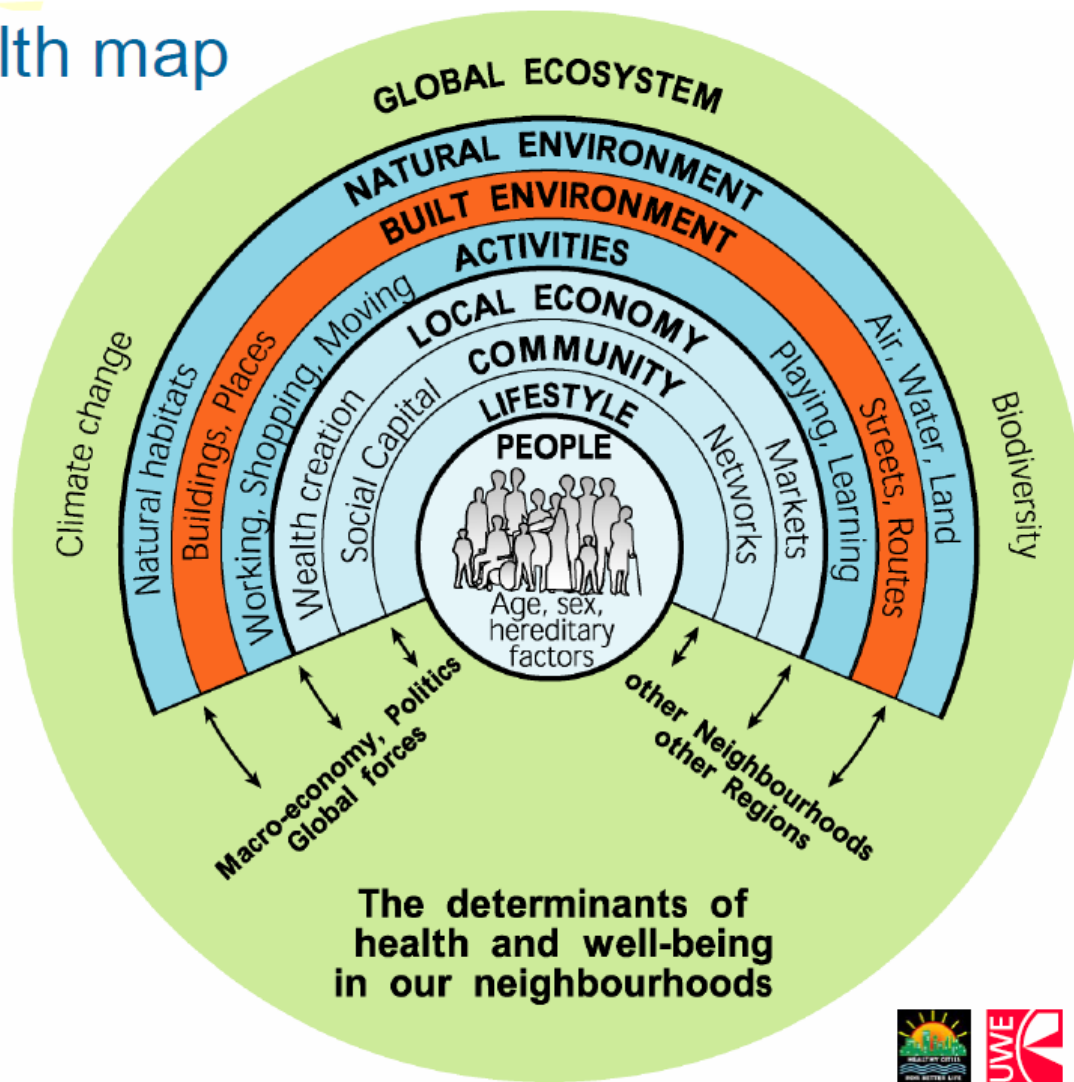


1	Cork	IRE	50	Viana do Castelo	POR
2	Galway	IRE	51	Sezai	POR
3	Belfast	UNK	52	Novi Sad	SRB
4	Cardiff	UNK	53	Sarajevo	BH
5	Newcastle	UNK	54	Ulyanovsk	RUS
6	Chelmsbury	RUS	55	Venice	ITA
7	Liverpool	UNK	56	Denizi	TUR
8	Stoke-on-Trent	UNK	57	Chinaiu	MDA
9	Swansea	UNK	58	Bucharest	ROM
10	Sandnes	NOR	59	Frederiksborg	DEN
11	Bedford County	NOR	60	Floedvi-Psychiko	GRE
12	Horsens	DEN	61	Chapayevsk	RUS
13	Copenhagen	DEN	62	Bardar City	TUR
14	Kuopio	FIN	63	Omurgazi	TUR
15	Klaipeda	LTH	64	Riga	LVA
16	Jurmala	LVA	65	Muzik Municipality	TUR
17	Cherapovets	RUS	66	Poznan	POL
18	Vilky Ustyug	RUS	67	Trabzon Metropolitan	TUR
19	Izhensk	RUS	68	Skopje	MKD
20	Dmitrovo	RUS	69	Bimo	CZE
21	Starogol City	RUS	70	Ljubljana	SVN
22	Eskisehir	TUR	71	Seapino	RUS
23	Goltsik	TUR	72	Pleus	EST
24	Yalova	TUR	73	Sant Andreu de la Barca	SPA
25	Bursa	TUR	74	Waterford	IRE
26	Nikici	TUR	75	Barcelona	SPA
27	Kadikoy	TUR	76	Brussels	BEL
28	Izmir	TUR	77	Derry City and Strabane	UNK
29	Karpykala/Amir	TUR	78	Düsseldorf	DEU
30	Amassoussion	GRI	79	Gorki	BLR
31	Warsaw	POL	80	Kaunas	LTH
32	Lodz	POL	81	L'Hospitalet de Llobregat	SPA
33	Dresden	DEU	82	Rennes	FRA
34	Vienna	AUS	83	Stockholm	SWE
35	Győr	HUN	84	Sunderland	UNK
36	Pecs	HUN	85	Turin	ITA
37	Zagreb	CRO	86	Turku	FIN
38	Celje	SVN	87	Novosibirsk	RUS
39	St Petersburg	RUS	88	Municipality of Arod	ROM
40	Rijeka	CRO	89	Belgova/Amir	TUR
41	Udine	ITA	90	Jerusalem	ISR
42	Modena	ITA	91	Podgorica	MCD
43	Bologna	ITA	92	Çankaya	TUR
44	Milan	ITA	93	Dnava	GRI
45	Rotterdam	NET			
46	Liège	BEL			
47	Ortishur (Trabzon)	TUR			
48	Vitoria-Gasteiz	SPA			
49	Villanueva de la				
50	Cañada	SPA			



World Health Organization
REGIONAL OFFICE FOR Europe

The settlement health map



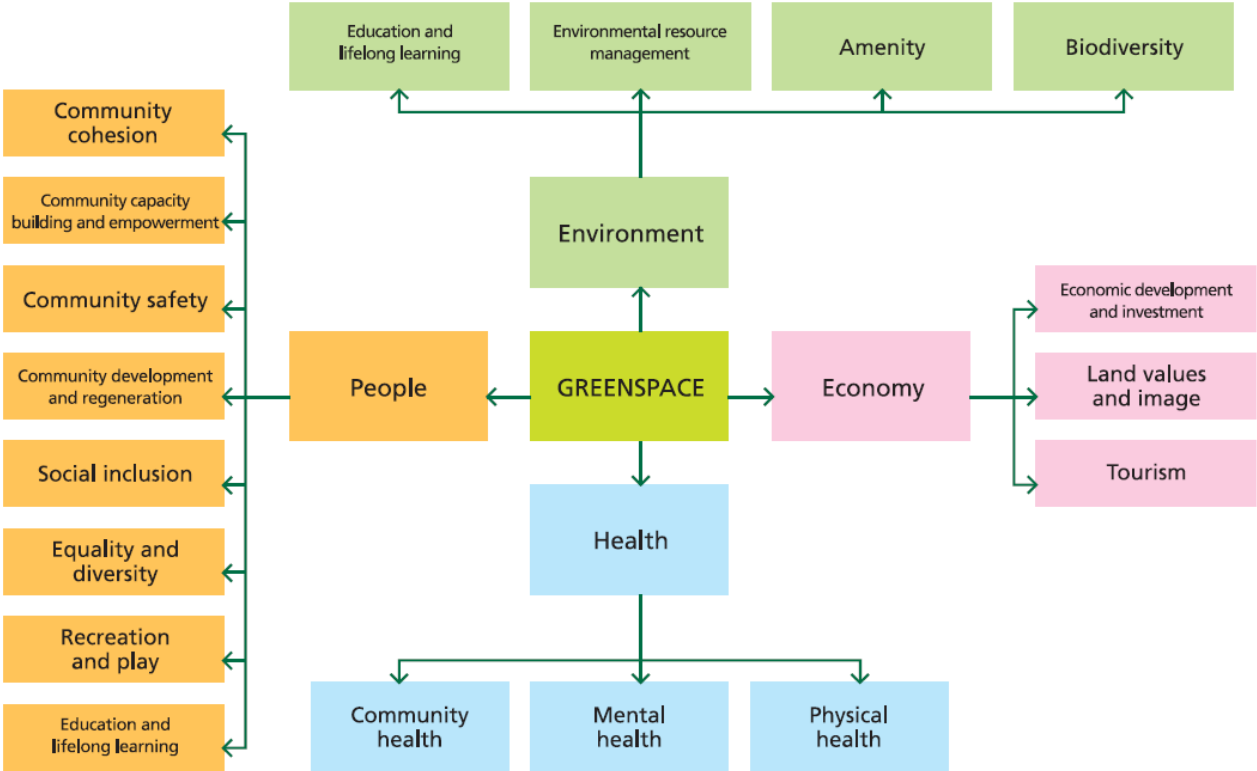
Faculty of the
Built Environment



Belfast
A World Health Organization
Healthy City



Green space and determinants of health



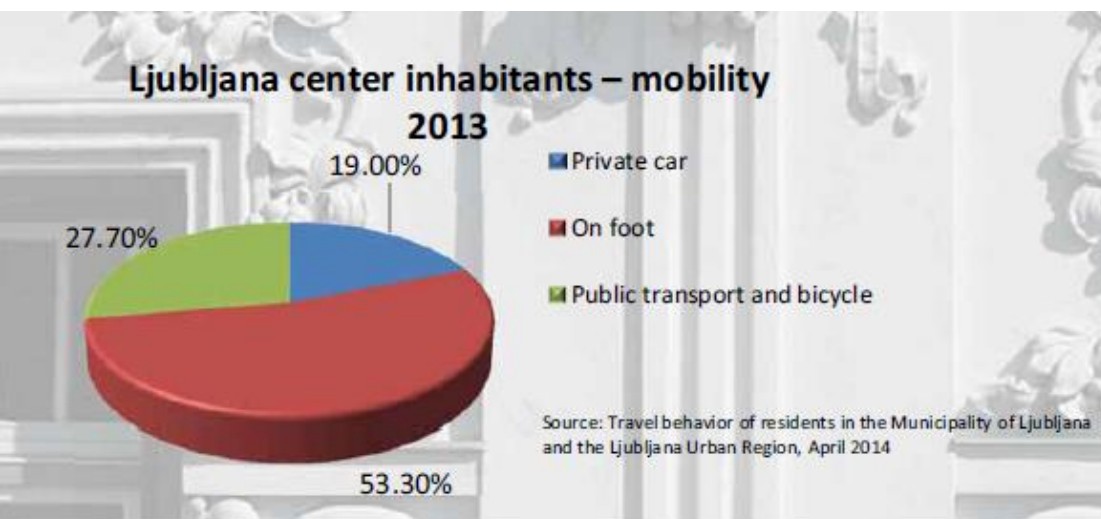
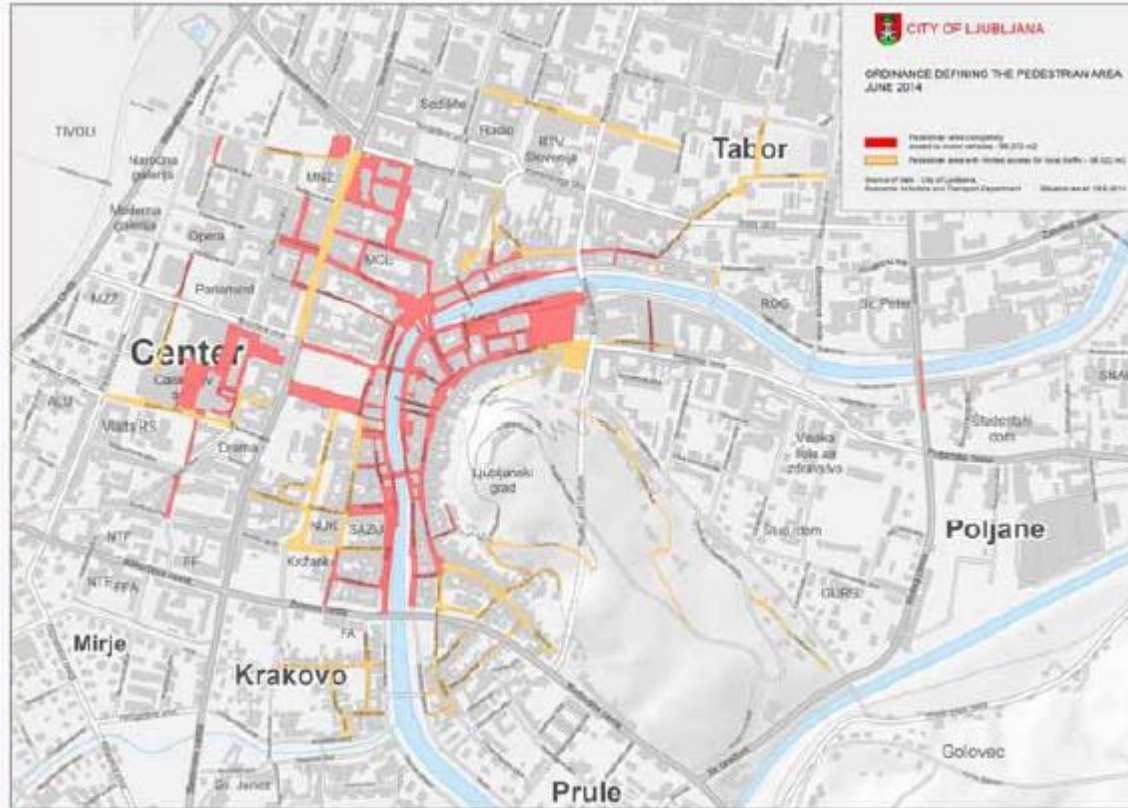
Health benefits of green space

- Key benefits:
 - Encourages physical activity
 - Offers opportunities for relaxation and stress relief
 - Supports and encourages social interaction
 - Absorbs air pollution (and reflects heat)
- These factors underlie other benefits

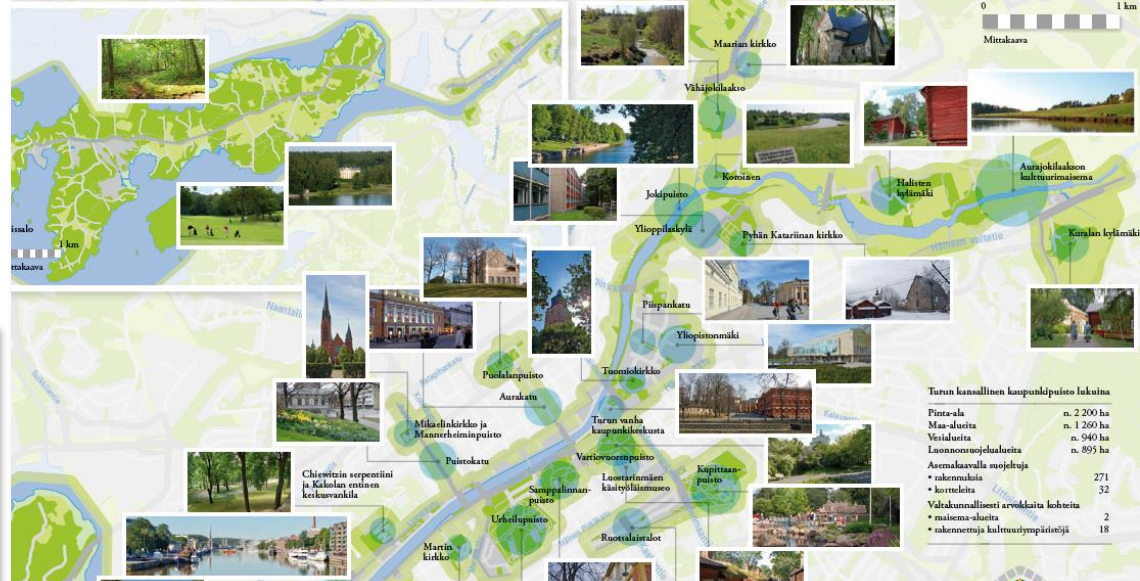


Access to high quality green space...

- Reduces mortality
- Reduces incidence of heart disease and diabetes
- Reduces stress and symptoms of depression
- Helps increase physical activity by up to 40%
- Supports children's healthy development
 - Reduces behavioural problems and symptoms of ADHD
- Can help improve sleep patterns



Greenways



TOP 10 MUST-SEE (LISTED NORTH TO SOUTH)



High Line at the Rail Yards
Stand on top of the 11th Avenue stairs and enjoy the 360° panoramic view that includes the Interim Walkway with its self-seeded landscape; the Hudson River, midtown's skyscrapers, industrial landmarks, and modern buildings; and the trains of the West Side Yard. In coming years, the rail yards will be built over and developed into Related Properties' Hudson Yards, a 26-acre mixed-use project.



Rail Track Walks
Here exposed original rail tracks allow you to walk along a path once travelled by freight trains.



Philip A. and Lisa Maria Falcone Flyover
As the High Line passes between two monumental former storage warehouses

at West 25th Street, a grated metal pathway – the Falcone Flyover – begins to lift from the structure's surface. Stretching for three blocks, the Flyover allows visitors to travel through a grove of bigleaf magnolia, sassafras, and serviceberry trees at canopy-level.



High Line Art Mural
Artist Barbara Kruger's large-scale, hand-painted mural *Untitled (Blind Idealism is...)* is installed on the wall of a neighboring building at West 22nd Street. This mural is one of 30+ artworks on view this year as part of High Line Art. [Learn more and download the art map: art.thehighline.org](http://art.thehighline.org)



Chelsea Thicket
The two-block-long Chelsea Thicket, between West 21st and West 22nd Streets, features a pathway winding gently through a mini forest of lush dogwoods, bottlebrush buckeye, hollies, and other dense shrubs and trees.



10th Avenue Square
This unique space where the High Line crosses 10th Avenue (at West 17th Street) was created by removing some of the railway's steel beams. The resulting amphitheater-like space boasts views up 10th Avenue to the north and views of the Hudson River and the Statue of Liberty to the south.



Northern Spur Preserve
At West 16th Street, a spur splits from the primary High Line structure and crosses 10th Avenue. The spur's plantings evoke the wild landscape the grew on the High Line before it was a park. [To download our current bloom list, go to www.thehighline.org](http://www.thehighline.org)



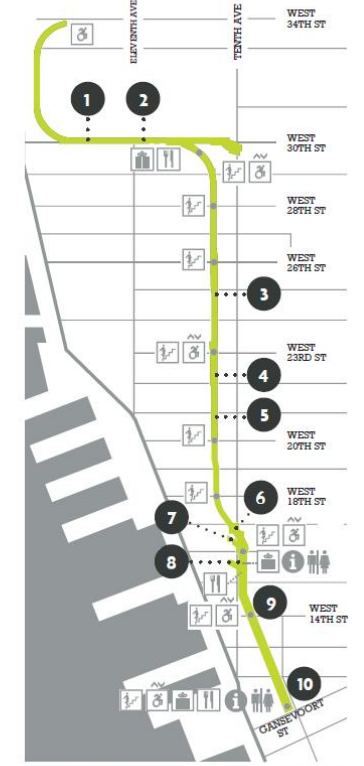
Chelsea Market Passage
This semi-enclosed passage, between West 15th and West 16th Streets



Diller - von Furstenberg Sundeck & Water Feature
This pathway, between West 14th and West 15th Streets, is flanked by lounge chairs and a water feature that offers visitors a chance to dip their toes during the spring and summer. You'll also catch some of the best views of the sunset from here.



Tiffany & Co. Foundation Overlook
A dramatic balcony marks the point at which the High Line was severed in the 1990s and demolished south of Gansevoort Street. The overlook offers a view eastward to the Meatpacking District and westward to the newly-opened Whitney Museum of American Art.



Micro green space



Thank you

Further information

Jonna Monaghan

jonna@belfasthealthycities.com

(028) 9032 8811

www.belfasthealthycities.com

 @belfasthealthy